

FOOTHILL MUNICIPAL WATER DISTRICT MANAGEMENT REPORT

FISCAL YEAR 2009-10



Mission Statement: *Foothill Municipal Water District will reliably deliver quality water to its member agencies in a cost-efficient manner to meet their projected demands.*

January 2011

CONTENTS

	Page
I. INTRODUCTION	I1-2
II. BOARD OF DIRECTORS	
Board of Directors	B1-3
Significant Board Actions	B4-6
Board Approved Projects	B7-8
Project Status	B9
III. FINANCIAL	
Budgeted Vs. Actual	F1-2
Actual Revenue and Actual Expenses (graph)	F3
Comparative Annual Expenses	F4
Weighted Average Operating Expense	F5
IV. WATER PRODUCTION	
Sales Summary	W1-2
Average Monthly Sales (graph)	W3
Cost of Imported Water	W4
Breakdown by Community Served	W5
Agency Water Use	W6
Conservation Measures	W7-8
Rainfall and Water Sales by Fiscal Year	W9
Rainfall and Temperature History	W10
Annual Production FMWD & Agencies (graphs)	W11-18
V. POWER USE	
Power Cost by Reservoir Systems	P1
Energy Cost/Acre Foot (graph)	P2
KWH Per Acre Foot Energy Use (graph)	P3

VI. GENERAL	
General Composition	G1
History	G1-2
Operation and Maintenance	G3-4
Operation and Maintenance Projects	G5-6
Metropolitan Water District	G7-8

I. INTRODUCTION

INTRODUCTION

This report provides general information regarding Foothill Municipal Water District for fiscal year 2009-2010, including: a list of the Board of Directors; financial information; and data on water use, power use and general background information. Below are some highlights of the year's initiatives and activities.

Water Supply Allocation

The most important actions in 2009-2010 included the extensive work that occurred in response to the ongoing water supply challenges and water allocation imposed by MWD resulting from three years of drought in Northern California, nine years on the Colorado River watershed and a decision by a Federal Judge that restricted pumping in the Sacramento—San Joaquin Delta due to the diminishing population of the Delta Smelt.

1991 was the last time the District was allocated water by Metropolitan Water District of Southern California. Since that time, Metropolitan embarked on an effort to provide 100% reliability to its member agencies— a process that was derailed with the federal restrictions on pumping from the Sacramento-San Joaquin Delta. Because of that derailment, Metropolitan again allocated water to the District beginning July 1, 2009 reducing MWD supplies by about 14%. In response, the District allocated water to its retail agencies.

Public response was tremendous and by the end of the fiscal year, the public had conserved an overwhelming 18% beyond its allocation for a total reduction in demand for imported water of 22%.

Local, Reliable Water Supply Program

The District continued in its efforts to gain independence from imported water. A facilities planning study was initiated, partially funded by the State Water Resources Control Board, to construct up to three satellite recycling plants to service retail agency needs. These plants can take wastewater stream, treat it to tertiary levels and deliver it, using purple pipes, for irrigation use or recharging the groundwater basin. The sludge could then be put back into the wastewater system. This study will be completed in 2011.

Encouragement of conservation continued with retail customers conserving about 30% from the base period. Incentives were offered to retail customers for the purchase of some conservation tools. Additionally, staff participated in events where conservation could be encouraged.

Other Achievements During 2009-2010 Fiscal Year

As part of the Local Reliable Water Supply Program, rehabilitation of the District's current infrastructure continued. Highlights of the rehabilitation include the following:

COMPLETION OF THE LA CRESCENTA FORCE MAIN PIPE LINING.

In October 2005, a leak was discovered in the La Crescenta Force Main. This 24" diameter water main is located in the Alta Canyon Freeway Overpass just north of Verdugo Boulevard. Emergency repairs were made to the southern sections of this pipeline. A video company was hired to inspect other portions of this water main and the results revealed more locations with corroded joints and potential failure points. The recommended solution to the problem was to line the interior of the existing pipe. Lining of the pipe was completed in April 2010 for a total cost of approximately \$350,000.

REPLACEMENT/REHABILITATION OF PUMPS AND/OR MOTORS AT MAIN PUMP STATION

The process of replacing or rehabilitating the pumps and/or motors of the boosters at the Main Pump Station was initiated. The rehabilitation or replacement of 3 boosters was completed in the fiscal year and 2 other boosters' rehabilitation or replacement were started. We expect that within the next 3 years all 1970s vintage boosters at the Main Pump Station will either be replaced or rehabilitated.

II. BOARD OF DIRECTORS

**FOOTHILL MUNICIPAL WATER DISTRICT
BOARD OF DIRECTORS**

Robert J. Gomperz
Director Division 1
Board Member since November, 2001

Melvin L. Matthews
Director Division 2
Board Member since February, 2008

LaDrena D. Dansby
Director Division 3
Board Member since January, 2005

Richard W. Atwater
Director Division 4
Board Member since February, 2006

Dean V. Wiberg
Director Division 5
Board Member since January, 2007

James T. Edwards
Representative on Board of Directors
Metropolitan Water District
Since May, 1999

Nina Jazmadarian
General Manager/Secretary
Since August, 2007

Karen Oblak
Administrative Manager/Treasurer
Since September, 2007

Wayne K. Lemieux
Lemieux & O'Neill
Legal Counsel since November, 1997

PAST TO PRESENT BOARD MEMBERS

Director Division 1

Joseph H. Tumbach
1/52 - 12/63

Leonard W. Jubb
1/64 - 1/80

Barnard Morse
2/80 - 2/95

Paul Brown
3/95 - 12/99

Mary Fruta Traylor
2/00 - 9/01

Robert J. Gomperz
11/01 - present

Director Division 2

W. Virgil Spaulding
1/52 - 1/55

Donald B. Milliken
1/55 - 9/68

Oscar Harper, Jr.
11/68 - 9/82

Ernest F. Smith
10/82 - 4/85

Arnold M. Ames
6/85 - 1/93

Thomas K. Underbrink
1/93 - 1/08

Melvin L. Matthews
2/08 - present

Director Division 3

Nelson Hayward
1/52 - 7/59

Julius A. Muller
4/60 - 1/75

Douglas B. Nickerson
3/75 - 1/85

Richard M. Miller
1/85 - 11/92

James T. Edwards
1/93 - 1/05

La Drena D. Dansby
1/05 - present

Director Division 4

Clifford Argue
1/52 - 11/64

Park L. Turrill
12/64 - 1/80

Lee B. Kline
2/80 - 11/95

Arthur H. Littlejohns
1/96 - 12/05

Richard W. Atwater
2/06 - present

Director Division 5

Robert Williams
1/52 - 10/98

Robert F. Sloan
11/98 - 11/06

Dean V. Wiberg
1/07 - present

**PAST TO PRESENT METROPOLITAN WATER DISTRICT
REPRESENTATIVES**

Nelson Hayward
Appointed 1/55

Brooks T. Morris
Appointed 8/90

Conrad R. Fanton
Appointed 10/59

William T. O'Neil
Appointed 12/91

Anderson B. Smedley
Appointed 5/65

James T. Edwards
Appointed 4/99

**SIGNIFICANT BOARD ACTIONS
JULY 2009- JUNE 2010**

JULY 2009

- Approved change to banking institution from Bank of America to Union Bank.
- Approved hiring Malcolm Pirnie to assist with engineering services for La Crescenta Force Main lining.
- Approved Citigroup as Underwriter for bond financing.
- Approved hiring Krieger and Stewart to assist with engineering services for fabrication and installation of new pump for 3 West Booster.

AUGUST 2009

- Approved District water conservation rebate incentives.

SEPTEMBER 2009

- Approved to retain Glenn Reiter & Associates for assistance in bond financing.
- Approved establishment of Emergency Fund.

OCTOBER 2009

- Approved resolution number 782-1009 to change time of Board meetings.
- Approved District requesting proposals for construction contractor for Pump 3 West.

NOVEMBER 2009

- Approved payment of ACWA dues.

DECEMBER 2009

- Approved organizational memberships for CY 2010.
- Extended General Manager's agreement to August 2011.
- Authorized General Manager to execute an agreement with Layne Christensen Company for rehabilitation of Pump 1 East.
- Authorized General Manager to execute agreement with Zim Industries Inc. dba Bakersfield Well and Pump Company for replacement of Pump 3 West.
- Authorized advertising for bids for La Crescenta Force Main lining.

JANUARY 2010

- Approved District's MWD Representative attending Colorado River Users Association meetings.
- Supported Director Wiberg's activities in ACWA.
- Authorized General Manager to execute an agreement with General Pump for rehabilitation of Pump 2 West.
- Authorized General Manager to execute agreement with DMR Team, Inc. for construction management/inspection services for the lining of the La Crescenta Force Main.

FEBRUARY 2010

- Supported the Safe, Clean & Reliable Water Supply Act.
- Increased Glenn Reiter and Associates budget for help with property tax assessment
- Voted on LAFCO nominations.
- Approve agreement with Spiniello Companies for the lining of the La Crescenta Force Main.
- Approve resolution for property assessment exemptions.

MARCH 2010

- Approved the renewal of the ACWA/JPIA Property Insurance Program.
- Approved engineering services for Booster Pump 1 West.
- Approved recycled water grant scope of works with Stetson Engineers, Geoscience and Morris Water Resources Consultants.
- Approved hiring Integrated Performance Consultants, Inc. for plant feasibility evaluation of satellite recycled water plants.
- Approved hiring Malcolm Pirnie, Inc. for assistance in completing 2010 Urban Water Management Plan.

APRIL 2010

- Authorized purchase of SCADA telemetry radios.

- Authorized purchase of electrical generator for Operations Center/Administrative Building.
- Authorized purchase of seismic control valve for Altadena Reservoirs' site.
- Authorized reaffirmation of stage 4: allocation level effective July 1, 2010.
- Opposed AB 1664 (Swanson): Metropolitan Water District Act.

MAY 2010

- None

JUNE 2010

- Approved budget for fiscal year 2010-2011 absorbing 75% of Metropolitan's rate increase.
- Authorized engineering services for rehab of La Canada East Reservoir.
- Authorized ratifying the Amended and Restated HBA Bylaws and JPA Agreement.

BOARD APPROVED CAPITAL PROJECTS IN FISCAL YEAR 2009-10

July 2009

Approved hiring Malcolm Pirnie to assist with engineering services for La Crescenta Force Main lining.

Approved hiring Krieger and Stewart to assist with engineering services for fabrication and installation of new pump for 3 West Booster.

August 2009

No reportable projects.

September 2009

No reportable projects.

October 2009

Approved District requesting proposals for construction contractor for Pump 3 West

November 2009

No reportable projects.

December 2009

Authorized General Manager to execute an agreement with Layne Christensen Company for rehabilitation of Pump 1 East.

Authorized General Manager to execute agreement with Zim Industries Inc. dba Bakersfield Well and Pump Company for replacement of Pump 3 West.

Authorized advertising for bids for La Crescenta Force Main lining.

January 2010

Authorized General Manager to execute an agreement with General Pump for rehabilitation of Pump 2 West.

Authorized General Manager to execute agreement with DMR Team, Inc. for construction management/inspection services for the lining of the La Crescenta Force Main.

February 2010

Approve agreement with Spiniello Companies for the lining of the La Crescenta Force Main.

March 2010

Approved engineering services for Booster Pump 1 West.

Approved recycled water grant scope of works with Stetson Engineers, Geoscience and Morris Water Resources Consultants.

Approved hiring Integrated Performance Consultants, Inc. for plant feasibility evaluation of satellite recycled water plants.

April 2010

Authorized purchase of SCADA telemetry radios.

Authorized purchase of electrical generator for Operations Center/Administrative Building.

Authorized purchase of seismic control valve for Altadena Reservoirs site.

May 2010

No reportable projects.

June 2010

Authorized engineering services for rehab of La Canada East Reservoir.

Status of Capital Projects as of June 30, 2010

	FY 2009-2010 Adopted Budget	Prior Costs	FY 2009-2010 Actual Costs	Total Actual Dollars Spent	Status of Project at End of FY 2009- 2010
<u>Pump Stations</u>					
Rehab 1 East- Pump and Motor	\$ -	\$ -	\$ 3,134	\$ 3,134	Complete
Rehab 1 West- Pump and Motor	\$ 25,000	\$ -	\$ 3,805	\$ 3,805	In Process
Rehab 2W - Pump Only	\$ -	\$ -	\$ 46,996	\$ 46,996	Complete
Rehab 3 West - Pump and Motor	\$ -	\$ 18,500	\$ 20,665	\$ 39,165	In Process
Rehab 4 East	\$ -	\$ 15,200	\$ 16,446	\$ 31,646	Complete
Rehab 1B	\$ -	\$ -	\$ 9,797	\$ 9,797	Complete
Motor Control Review and Repair	\$ -	\$ -	\$ 225	\$ 225	In Process
70E Compliance (ArcFlash) (P-1)	\$ -	\$ -	\$ 1,641	\$ 1,641	In Process
70E Compliance (ArcFlash) (P-2)	\$ -	\$ -	\$ 1,950	\$ 1,950	In Process
<u>Interconnections</u>					
Linda Vista Intertie	\$ 45,000	\$ -	\$ 6,575	\$ 6,575	Complete
<u>IT</u>					
SCADA Replacement	\$ 95,000	\$ -	\$ 24,178	\$ 24,178	In Process
<u>Reservoirs</u>					
Altadena Earthquake Valve	\$ 15,000	\$ -	\$ 24,079	\$ 24,079	In Process
La Canada East Reservoir Rehab/Recoating	\$ -	\$ 2,575	\$ -	\$ 2,575	In Process
<u>Transmission Mains</u>					
La Crescenta Force Main Rehabilitation	\$ 420,000	\$ 7,508	\$ 332,175	\$ 339,683	Complete
<u>Administration and Ops Support</u>					
Gen Set & UPS at Admin/Ops Center	\$ 12,000	\$ -	\$ 18,611	\$ 18,611	In Process
<u>Water Supply Enhancement Projects</u>					
Engineering and Pre-Design	\$ 350,000	\$ 52,698	\$ 23,641	\$ 76,339	In Process
Total	\$ 962,000	\$ 96,481	\$ 533,918	\$ 630,399	

III. FINANCIAL

FMWD BUDGETED VS. ACTUAL FOR FISCAL YEAR 2009-10

Based on Actual Sales of 10,089 Acre Feet*

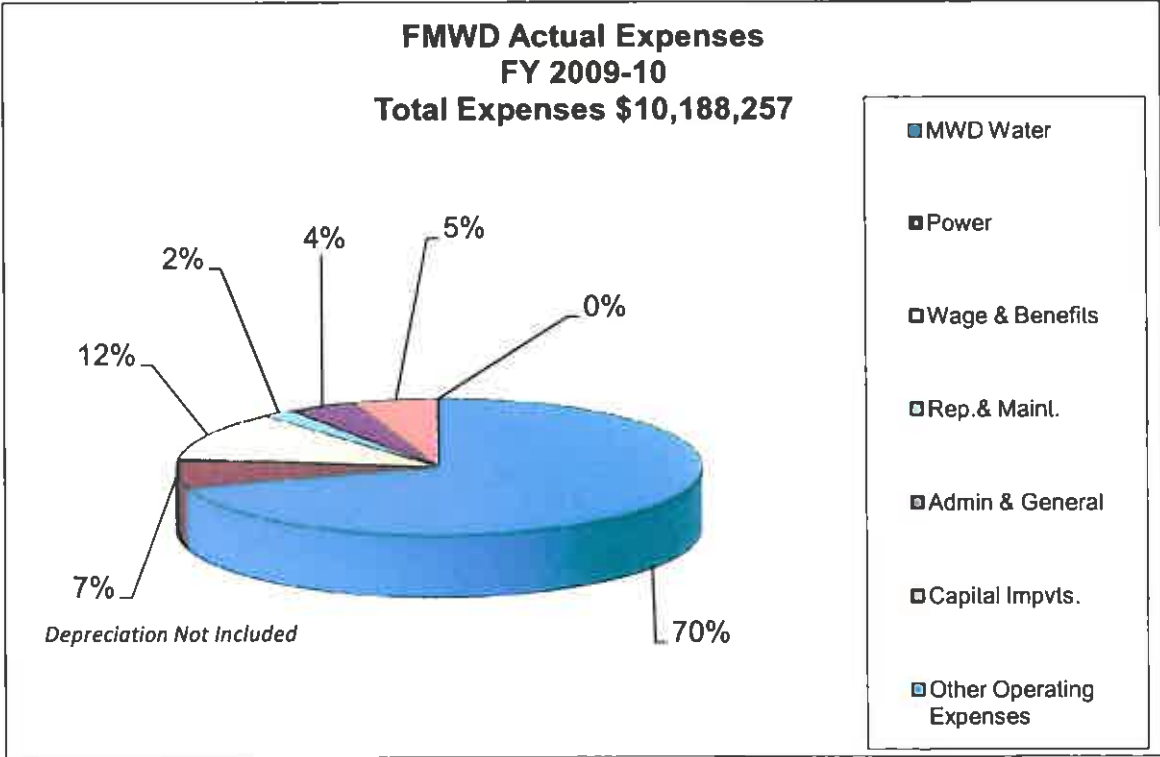
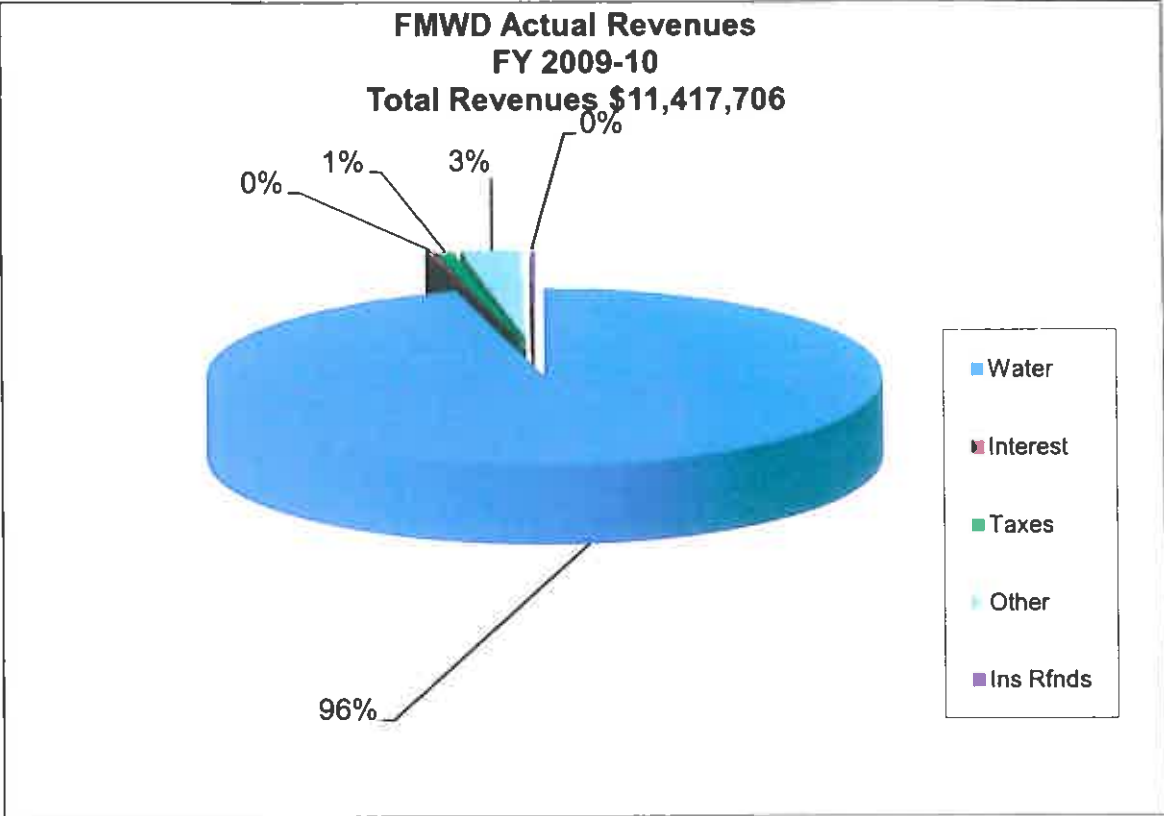
5

Acre Feet Sold	11,000	10,089		
	Adjusted Budget Amount	Actual Amount	Budget Cost/AF	Actual Cost/AF
Revenue:				
Water Sales (for resale)	\$ 12,372,158	\$ 10,959,110	\$ 1,124.74	\$ 1,086.24
Interest earnings	40,000	39,077		
Taxes	54,000	82,661		
Insurance Refunds, Prior Year		17,645		
FHCUP Administrative Fee	12,600	12,600		
Energy Charge Reimbursement	-	230,366		
Other	-	92,397		
TOTAL REVENUE	\$ 12,478,758	\$ 11,433,856	\$ 1,134.43	\$ 1,133.30
Expenses:				
MWD water purchases	\$ 7,954,222	\$ 7,194,448	\$ 723.11	\$ 713.10
Power	847,167	691,826	77.02	68.57
Power FHCUP	-	23,260		
	8,801,389	7,909,534	800.13	783.98
Wages & Employee Benefits				
Administration	246,700	233,788		
Operations & Maintenance	419,900	416,676		
Benefits	419,600	514,943		
	1,086,200	1,165,407	98.75	115.51
Repairs & Maintenance:				
Maintenance + Service	166,000	86,998		
Materials	35,000	44,155		
Telemetry & Communications	32,000	26,992		
Utilities	23,000	17,360		
Water Quality Monitoring	30,000	24,111		
Miscellaneous	9,400	2,650		
	295,400	202,266	26.85	20.05
Administrative & General:				
Office expense/Insurances	136,050	117,147		
Pass lease/ agrmt	4,000	3,593		
Director Fees/Expense	39,350	36,651		
Director Election Costs	-	-		
Water Conservation	50,000	28,961		
Miscellaneous	24,700	25,884		
	254,100	212,236	23.10	21.04
Professional Service				
Legal, Audit & Professional	57,000	42,842		
Consulting Service	300,000	160,692		
IT Services	40,000	18,780		
	397,000	222,314	36.09	22.04
Capital Improvements	1,430,800	533,918	130.07	52.92
Equipment Replacement	27,000	3,792	2.45	0.38

	Adjusted Budget Amount	Actual Amount	Budget Cost/AF	Actual Cost/AF
TOTAL EXPENSE	\$ 12,291,889	\$ 10,249,467	\$ 1,117.44	\$ 1,015.91
Income/Loss before Depreciation	\$ 186,869	\$ 1,184,389	\$ 16.99	\$ 117.39
Depreciation	233,200	206,606		
INCOME/(LOSS)	\$ (46,331)	\$ 977,783	\$ (4.21)	\$ 96.92
Use of Water Resource Fund	50,000	32,189	\$ 4.55	\$ 3.19
NET INCOME (LOSS)	\$ 3,669	\$ 1,009,972	\$ 0.33	\$ 100.11

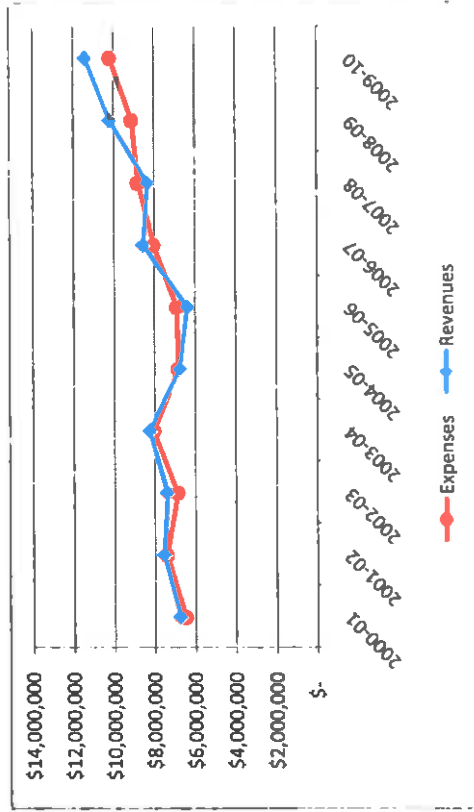
Notes:

- 1 Depreciation collected however actual not known until audit is complete
- 2 FHCUP energy reimbursed partially by MWD. Still reconciling actual figures.
Some agencies opted to not receive reimbursement until actual data reconciled.
3. Some capital projects not completed because other previously unknown projects took precedent.



COMPARATIVE ANNUAL EXPENSES

Acre Feet	2000-01	2001-02	2002-03	2003-04	2004-05	2005-06	2006-07	2007-08	2008-09	2009-10
Water Purchase	\$ 4,813,199	\$ 5,317,621	\$ 5,026,569	\$ 6,095,960	\$ 5,005,918	\$ 4,615,593	\$ 5,743,689	\$ 5,703,016	\$ 6,472,677	\$ 7,194,448
Power Purchase/Expense	741,834	953,006	866,854	901,622	729,129	718,459	861,175	765,463	770,026	715,086
Wages	440,796	474,269	468,042	488,504	510,746	529,255	522,038	549,981	616,307	650,464
Benefits	62,732	76,663	94,396	148,831	209,379	335,919	332,880	376,141	388,450	514,943
System Maint & Equip	98,284	130,447	118,096	95,782	106,622	191,703	196,418	142,554	192,514	202,266
Administrative/General	180,636	187,202	217,317	176,218	263,884	242,571	340,383	294,767	465,832	434,550
Capital Improvements	166,629	283,480	102,257	140,201	44,807	306,053	76,515	1,030,181	254,481	537,710
Expenses	\$ 6,504,110	\$ 7,422,688	\$ 6,893,531	\$ 8,047,118	\$ 6,870,485	\$ 6,939,551	\$ 8,073,098	\$ 8,862,103	\$ 9,160,287	\$ 10,249,467
Revenues	\$ 6,760,113	\$ 7,540,049	\$ 7,389,428	\$ 8,250,294	\$ 6,784,389	\$ 6,413,046	\$ 8,577,458	\$ 8,370,875	\$ 10,221,176	\$ 11,433,856



FOOTHILL MUNICIPAL WATER DISTRICT
WEIGHTED AVERAGE OPERATING EXPENSE

FISCAL YEAR 2009-10

	Eastside Pumps	Westside Pumps	Main Plant Subtotal	Berkshire Pumps	System Total
Production (Acre Feet) *	2971	6743	9714	2851	9714
Average Head (Feet)	270	230	239	460	458
Energy Use (KWH)	1,291,600	2,350,400	3,642,000	2,039,972	5,681,972
Energy Use (KWH/AF)	434.7	348.6	374.9	715.5	584.9
Energy Use (KWH/AF/100' lift)	161.0	151.6	156.9	155.5	127.7
Power Cost (\$)	\$ 160,324	\$ 293,824	\$ 454,148	\$ 256,143	\$ 710,291
Power Cost (\$/KWH)	0.1241	0.1250	0.1247	0.1256	0.1250
Power Cost (\$/AF)	53.96	43.57	46.75	89.84	73.12
Power Cost (\$/AF/100' lift)	19.99	18.95	19.56	19.53	15.97
O&M Labor Cost (\$)	--	--	--	--	416,676
O&M Labor Cost (\$/AF)	--	--	--	--	42.89
O&M Labor Cost (\$/AF/100' lift)	--	--	--	--	9.37
Repair & Mtce. (\$)	--	--	--	--	202,266
Repair & Mtce. (\$/AF)	--	--	--	--	20.82
Repair & Mtce. (\$/AF/100' lift)	--	--	--	--	4.55
Total O&M Cost (\$)	--	--	--	--	\$ 1,329,233
Total O&M Cost (\$/AF)	--	--	--	--	136.84
Total O&M Cost (\$/AF/100' lift)	--	--	--	--	29.88

* From FMWD meters. Does not include FHCUP water and Glendale/CVWD transfer.

IV. WATER PRODUCTION

**FOOTHILL MUNICIPAL WATER DISTRICT
SALES SUMMARY
FISCAL YEAR 2009-10**

<u>AGENCY</u>	<u>Type</u>	<u>Acres Feet</u>	<u>Rate</u>	<u>Sales</u>	<u>% of \$ Sales</u>	<u>% of AF Sales</u>
Crescenta Valley Water District	CC ⁽¹⁾			\$ 46,902.00		
	RTS ⁽¹⁾			67,164.00		
	A&OM			214,271.70		
	CIP & Rehab			245,232.48		
	Energy			49,042.00		
	TIER 1	1,723.7	\$930/\$1052/\$701	1,546,305.80		
		1,723.7		\$ 2,168,917.98	19.4%	17.1%
Kinneloa Irrigation District	CIP & Rehab	0.0		\$ 3,373.02		
		0.0		\$ 3,373.02	0.0%	0.0%
La Canada Irrigation District	CC ⁽¹⁾			41,298.00		
	RTS ⁽¹⁾			82,632.00		
	A&OM			259,697.22		
	CIP & Rehab			209,614.50		
	Energy			63,914.00		
	TIER 1	960.5	\$930/\$1052/\$701	1,124,270.80		
	TIER 1 ⁽²⁾	1,350.4	\$848/\$970/\$701	868,670.00		
	2,310.9		\$ 2,650,096.52	23.7%	22.9%	
Las Flores Water Company	CC ⁽¹⁾			9,798.00		
	RTS ⁽¹⁾			20,910.00		
	A&OM			64,839.66		
	CIP & Rehab			15,417.00		
	Energy			9,554.00		
	TIER 1	519.9	\$854/\$976/\$701	432,052.70		
		519.9		\$ 552,671.36	4.9%	5.2%
Lincoln Avenue Water Company	CC ⁽¹⁾			21,000.00		
	RTS ⁽¹⁾			35,652.00		
	A&OM			135,800.22		
	CIP & Rehab			32,112.48		
	Energy			38,833.00		
	TIER 1	1,771.4	\$854/\$976/\$701	1,460,210.90		
	TIER 2	46.2	\$970/\$1086/\$811	48,787.20		
	1,817.6		\$ 1,772,395.80	15.8%	18.0%	
Mesa Crest Water Company	CC ⁽¹⁾			11,898.00		
	RTS ⁽¹⁾			20,988.00		
	A&OM			65,237.16		
	CIP & Rehab			32,082.48		
	Energy			7,034.00		
	TIER 1	630.0	\$848/\$970/\$701	524,026.20		
	TIER 2	10.3	\$964/\$1080/\$811	10,815.00		
	640.3		\$ 672,080.84	6.0%	6.3%	
Rubio Canon Land & Water Association	CC ⁽¹⁾			-		
	RTS ⁽¹⁾			27,072.00		
	A&OM			115,287.78		
	CIP & Rehab			26,034.48		
	Energy			24,013.00		
	TIER 1	650.4	\$854/\$976/\$701	528,035.40		
		650.4		\$ 720,442.66	6.4%	6.4%
Valley Water Company	CC ⁽¹⁾			46,902.00		
	RTS ⁽¹⁾			76,422.00		
	A&OM			311,293.50		
	CIP & Rehab			151,543.02		
	Energy			37,976.00		
	TIER 1	1,923.0	\$848/\$970/\$701	1,493,140.90		
	TIER 2	503.9	\$964/\$1080/\$811	529,098.00		
	2,426.9		\$ 2,646,375.42	23.7%	24.1%	
	10,090		\$ 11,186,253.60	100.0%	100.0%	

⁽¹⁾ MWD Pass through charge directly to retail agency

⁽²⁾ Includes FHCUP water

⁽³⁾ Total does not include power & O&M credit from MWD for FHCUP

<u>SALES REVENUE & Variable Charge</u>		<u>% Revenue</u>	
Tier 1 Supply Rate	\$	7,976,713	71%
Tier 2 Supply Rate	\$	588,700	5%
Energy Charge	\$	230,366	2%
SALES REVENUE TOTAL	\$	8,795,779	79%

FIXED CHARGES

CC - Capacity Charge	\$	177,798	2%
RTS - Readiness-to-Serve	\$	330,840	3%
Admin & O&M Charge	\$	1,166,427	10%
CIP & Rehab	\$	715,409	6%
FIXED CHARGES TOTAL		\$2,390,474.70	21%

GRAND TOTAL		\$11,186,253.60	100%
--------------------	--	------------------------	-------------

*CC and RTS are direct pass-through.

Tier 1, Tier 2 Supply Rate

Metropolitan Water District adopted a new rate structure January 2003. The main component is a two-tier approach to supply pricing. Foothill had the option of submitting a purchase order to purchase up to 90% of its base level at the Tier 1 supply rate. Any amount of water above the 90% will be at the Tier 2 supply rate. Foothill sold 560 Acre Feet of Tier 2 in 2009. The water year for Tier 1/Tier 2 is calculated beginning January.

Energy Charge

Each agency is charged power costs based on the proportionate amount of energy used for delivering water to that agency compared to other agencies times the amount of the energy bill for that month.

Capacity Charge

The Capacity Charge recovers costs incurred to provide distribution capacity used to meet peak day demands. It provides a price signal to encourage member agencies to reduce peak day demands on the system and to shift demands that occur during the May 1 through September 30 period into the October 1 through April 30 period. This results in more efficient utilization of Metropolitan's existing infrastructure and defers capacity expansion costs.

Readiness-to-Serve Charge

Charge to recover the principal and interest payments on non-tax supported debt service that has been or will be issued to fund capital improvements. Charge is allocated among member agencies in proportion to the rolling average of MWD water sales in acre feet.

Administrative and Operations and Maintenance Charge

Each agency pays for a share of the District's administrative and operating costs attributable to the provision of water service to that customer.

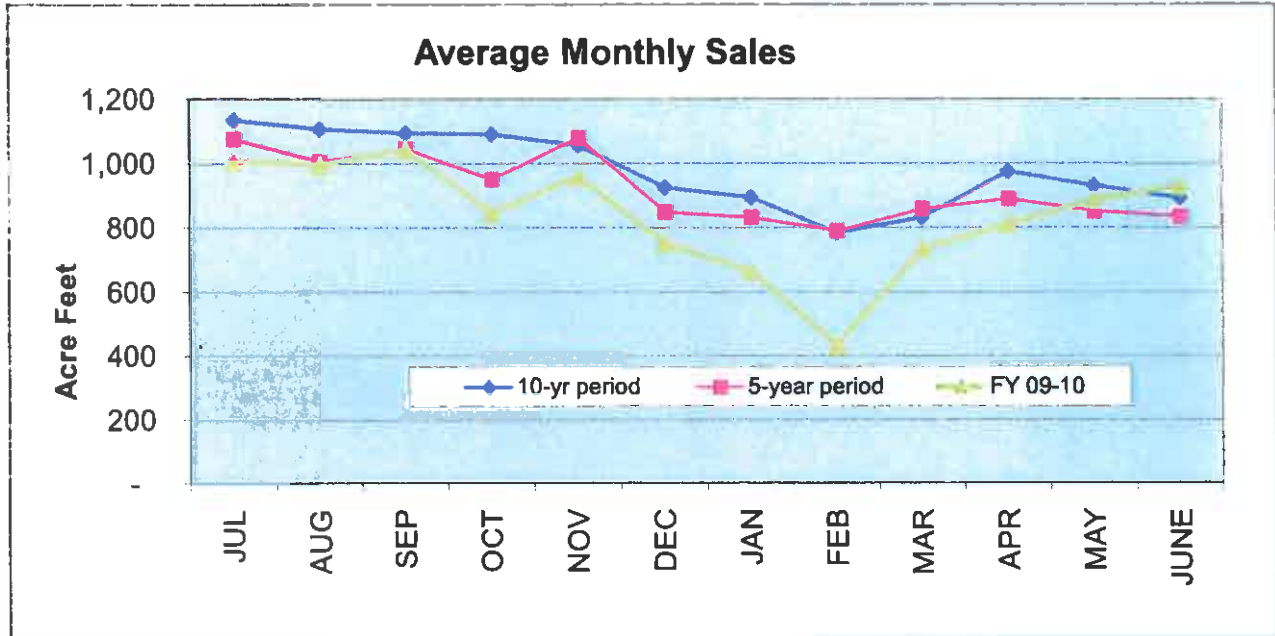
Capital and Rehabilitation Charge

Each agency pays for a share of the District's capital and rehabilitation costs based on facilities used and portion of facility used in comparison to other agencies. For water resource development, each agency pays for a portion of engineering studies based on ultimate demands as quantified in the Water Resource Plan.

FHCUP Water Sold

During the fiscal year La Canada Irrigation District took 183 AF of FHCUP water in-lieu of FMWD deliveries. These were part of Tier 1 sales.

**FOOTHILL MUNICIPAL WATER DISTRICT
WATER SALES**

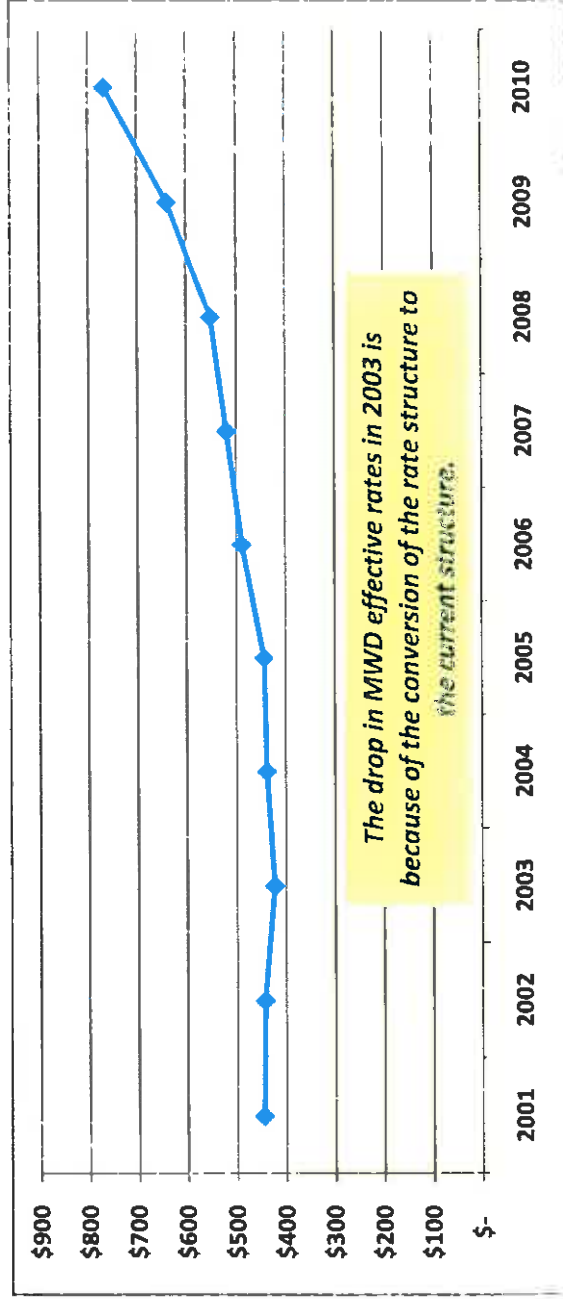


HIGHEST SALES YEARS

2003-04	14,902	acre feet
2001-02	13,058	acre feet
2006-07	12,572	acre feet
2007-08	12,331	acre feet
2002-03	12,792	acre feet
1999-00	11,982	acre feet
2000-01	11,730	acre feet

Includes replenishment/injection deliveries

COST OF IMPORTED WATER 2000 - 2010



Basic rates plus average readiness-to-serve charge, connection maintenance charge and capacity charge.

**2009-10 TOTAL WATER PRODUCTION OF FMWD AGENCIES
Breakdown by Community Served**

<u>Community Served</u>	<u>FMWD</u>		<u>LOCAL</u>		<u>Total Acre Feet</u>
	<u>Acre Feet</u>	<u>% of Total</u>	<u>Acre Feet</u>	<u>% of Total</u>	
ALTADENA:					
Las Flores Water Company	519.9	62.9%	306.7	37.1%	826.6
Lincoln Avenue Water Company*	1,817.6	76.4%	561.0	23.6%	2,378.6
Rubio Cañon L&W Association	<u>650.4</u>	<u>31.7%</u>	<u>1,404.5</u>	<u>68.3%</u>	<u>2,054.9</u>
Altadena Totals	2,987.9	56.8%	2,272.2	43.2%	5,260.1
LA CAÑADA FLINTRIDGE:					
La Cañada Irrigation District*	2,310.7	94.8%	126.2	5.2%	2,436.9
Mesa Crest Water Company	640.3	100.0%	0.0	0.0%	640.3
Valley Water Company	<u>2,426.9</u>	<u>72.7%</u>	<u>909.7</u>	<u>27.3%</u>	<u>3,336.6</u>
La Canada Flintridge Totals	5,377.9	83.8%	1,035.9	16.2%	6,413.8
LA CRESCENTA:					
Crescenta Valley Water District*	<u>1,723.7</u>	<u>38.9%</u>	<u>2,704.6</u>	<u>61.1%</u>	<u>4,428.3</u>
La Crescenta Totals:	1,723.7	38.9%	2,704.6	61.1%	4,428.3
FMWD AGENCIES TOTAL	10,089.5	62.7%	6,012.7	37.3%	16,102.2

*Note: There is a Total 183.2 AF FHCUP Water Sold included above for LCID in FY 2009-2010.

There is a total of 85.4 AF of Water Sold from the Glendale/CVWD interconnection included in CVWD figures.

511 AF of water transferred to Pasadena from Lincoln is not included in local production.

ANNUAL AND FIVE YEAR AVERAGE ANNUAL FMWD DELIVERIES

<u>AGENCY</u>	<u>05-06</u>	<u>06-07</u>	<u>07-08</u>	<u>08-09</u>	<u>09-10</u>	<u>5 YR AVG</u>
	<u>AF</u>	<u>AF</u>	<u>AF</u>	<u>AF</u>	<u>AF</u>	<u>AF</u>
Crescenta Valley Water Dist.	1,694.5	2,516.7	2,209.6	1,996.4	1,638.3	2,011.1
La Canada Irrigation District	2,679.7	3,033.7	2,922.7	2,791.4	2,127.7	2,711.0
Las Flores Water Company	685.3	741.2	657.0	582.0	519.9	637.1
Lincoln Avenue Water Company*	1,205.9	878.4	1,035.6	921.9	1,817.6	1,171.9
Mesa Crest Water Company	680.2	774.3	745.2	733.7	640.3	714.7
Rubio Canon L&W Association*	702.2	992.5	203.2	497.7	650.4	609.2
Valley Water Company*	<u>2,953.2</u>	<u>3,634.9</u>	<u>2,896.9</u>	<u>2,877.3</u>	<u>2,426.9</u>	<u>2,957.8</u>
Annual Total	10,601.0	12,571.7	10,670.2	10,400.4	9,821.1	10,812.9

Note: There was 952.47 AF FHCUP water sold in FY 2008-2009 that is not reflected in deliveries.

There was 183 AF of FHCUP water sold in FY 2009-2010 that is not reflected in deliveries.

There was 85.4 AF of water delivered through the Glendale/CVWD interconnection not included in deliveries.

**FOOTHILL MUNICIPAL WATER DISTRICT
AGENCY WATER USE**

FISCAL YEAR 2009-10

AGENCY	ACTIVE METERS	LOCAL WATER		FMWD WATER		TOTAL WATER		LOCAL WTR USE		FMWD WTR USE		TOTAL WTR USE		WTR USE	
		AF	%	AF	%	AF	%	AF/MTR	AF/MTR	AF/MTR	AF/MTR	AF/MTR	AF/MTR	AF/CAP/YR (3.0/MTR)	GAL/CAP/DY (3.0/MTR)
Crescenta VWD	8,180	2,705	61.1%	1,724	38.9%	4,428	38.9%	0.33	0.21	0.54	0.18	0.18	0.54	0.18	161
La Canada ID	2,905	126	5.2%	2,311	94.8%	2,437	94.8%	0.04	0.80	0.84	0.28	0.28	0.84	0.28	250
Las Flores WC	1,473	307	37.1%	520	62.9%	827	62.9%	0.21	0.35	0.56	0.19	0.19	0.56	0.19	167
Lincoln Ave WC*	4,423	561	23.6%	1,818	76.4%	2,379	76.4%	0.13	0.41	0.54	0.18	0.18	0.54	0.18	160
Mesa Crest WC	707	0	0.0%	640	100.0%	640	100.0%	0.00	0.91	0.91	0.30	0.30	0.91	0.30	270
Rubio Canon L&W*	3,150	1,405	68.3%	650	31.7%	2,055	31.7%	0.45	0.21	0.65	0.22	0.22	0.65	0.22	194
Valley WC*	3,579	910	27.3%	2,427	72.7%	3,337	72.7%	0.25	0.68	0.93	0.31	0.31	0.93	0.31	278
TOTALS	24,417	6,013	37.3%	10,090	62.7%	16,103	62.7%	0.25	0.41	0.66	0.22	0.22	0.66	0.22	196

5 YEAR AVERAGE: 2005-06 THROUGH 2009-10

AGENCY	ACTIVE METERS	LOCAL WATER		FMWD WATER		TOTAL WATER		LOCAL WTR USE		FMWD WTR USE		TOTAL WTR USE		WTR USE	
		AF	%	AF	%	AF	%	AF/MTR	AF/MTR	AF/MTR	AF/MTR	AF/MTR	AF/MTR	AF/CAP/YR (3.0/MTR)	GAL/CAP/DY (3.0/MTR)
Crescenta VWD	8,142	3,172	61.1%	2,023	38.9%	5,195	38.9%	0.39	0.25	0.64	0.21	0.21	0.64	0.21	190
La Canada ID	2,904	137	4.8%	2,748	95.2%	2,885	95.2%	0.05	0.95	0.99	0.33	0.33	0.99	0.33	296
Las Flores WC	1,473	337	34.6%	637	65.4%	974	65.4%	0.23	0.43	0.66	0.22	0.22	0.66	0.22	197
Lincoln Ave WC*	4,423	1,548	52.8%	1,385	47.2%	2,933	47.2%	0.35	0.31	0.66	0.22	0.22	0.66	0.22	197
Mesa Crest WC	709	0	0.0%	715	100.0%	715	100.0%	0.00	1.01	1.01	0.34	0.34	1.01	0.34	300
Rubio Canon L&W*	3,147	1,548	64.7%	845	35.3%	2,393	35.3%	0.49	0.27	0.76	0.25	0.25	0.76	0.25	226
Valley WC*	3,575	1,090	28.3%	2,763	71.7%	3,853	71.7%	0.30	0.77	1.08	0.36	0.36	1.08	0.36	321
TOTALS	24,372	7,833	41.3%	11,115	58.7%	18,948	58.7%	0.32	0.46	0.78	0.26	0.26	0.78	0.26	231

*2008-09 FMWD includes 952.7 AF FHCUP Water Sold for LAWC, RCLWA & VWC

*2009-10 FMWD includes 183 AF of FHCUP sales to LCID.

*2009-10 FMWD excludes 511 AF of water transferred to Pasadena.

FMWD CONSERVATION MEASURES FISCAL YEAR 2009-10

Conservation continued to be a priority message for FMWD. Due to three years of drought in Northern California, nine years on the Colorado River watershed and a decision by a Federal Judge that restricted pumping in the Sacramento – San Joaquin Delta because of impacts on the Delta Smelt, water supplies were not enough to meet demands for much of the State. In April 2009, MWD's Board of Directors implemented its allocation plan effective July 1, 2009.

FMWD's Board, in response, also implemented Stage 4 of its allocation plan effective July 1, 2009 to the Foothill retail agencies. This plan for the most part mirrors the MWD plan. The allocation stayed in effect the entire fiscal year. Customer response was great and at the end of the fiscal year, conservation of imported water was 18% beyond the District's allocation.

In December 2009, the first meeting of the City of La Canada Flintridge's Mayor's Blue Ribbon Committee on Local Water Issues convened. This Committee was tasked with studying local water issues and providing recommendations to the City Council that would educate the public regarding water and encourage residents and businesses to use water more efficiently. The committee included representatives of Foothill as well as the four retail agencies that serve the City, City staff, City Council representatives, environmental representatives as well as representatives from the larger water users in the City. A list of recommendations was made and presented to the City Council in August 2010.

Descanso Gardens was the scene of the first "New Water Family Festivals" on Saturday, June 12, 2010. The second was held at the Altadena Community Center on June 26th. Local residents came to learn how to stretch water supplies through conservation and grey-water use. The festival featured exhibits, presentations by experts, educational material to read and conservation devices to take home and put to use.

Solar Cup is an annual event promoted by MWD. High school teams, entered in the competition, design a boat that runs only on solar power. The team boat competes in two races, a sprint event and an endurance event. The different events test teams' ability to design their solar boats for maximum energy efficiency as well as speed. Foothill and Valley Water Company sponsored a boat constructed by La Canada High School.

Foothill and its distributing agencies continued an agreement with MWD for participation in rebate programs both for residential and commercial customers. Items that could receive rebates included high efficiency clothes washers, weather based irrigation controllers, synthetic turf and water brooms. In an effort to increase conservation awareness in the District's service area, Foothill matched the MWD rebate for weather-based irrigation controllers and synthetic turf.

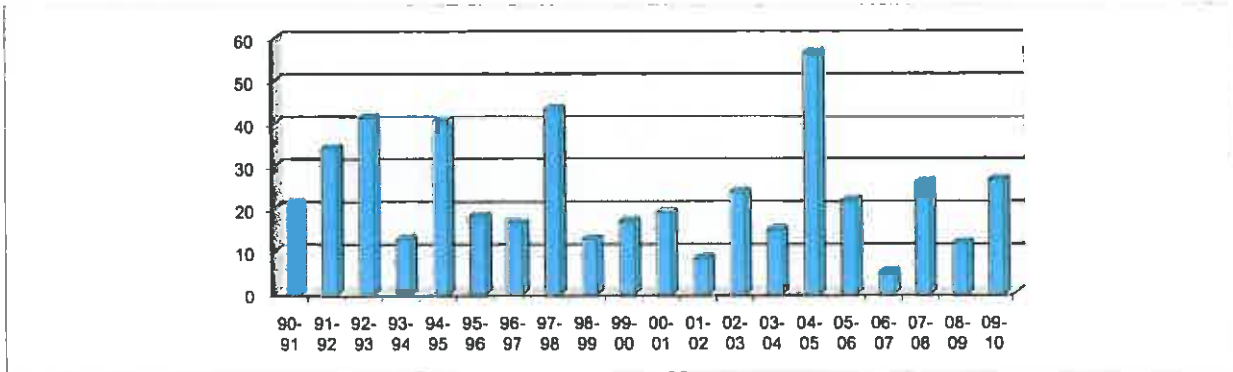
Foothills Community Business Expo, organized by the area's three chambers of commerce, was held at Verdugo Hills Hospital in September. Foothill Municipal Water District sponsored a booth at this event providing promotional conservation items and literature while discussing rebate opportunities with the attendees. Foothill sponsored three California Friendly Landscape Training classes in its service area where attendees learned about drought-tolerant and California native plants, proper irrigation methods and various other conservation related topics.

RAINFALL AND WATER SALES BY FISCAL YEAR
 Firm Water Sales Only; does not include replenishment/injection water *

YEAR	JUL	AUG	SEP	OCT	NOV	DEC	JAN	FEB	MAR	APR	MAY	JUN	TOTAL	YEAR	TOTAL	AC. FT.
1970-71	0.0	0.0	0.0	0.0	7.7	5.9	0.9	1.1	1.1	0.7	0.6	0.0	18.0	1970-71	18.0	9,423.4
1971-72	0.0	0.0	0.0	0.3	0.4	7.5	0.0	0.0	0.0	0.2	0.0	0.5	8.9	1971-72	8.9	10,584.8
1972-73	0.0	0.4	0.1	0.3	3.8	2.5	4.4	12.2	4.4	0.1	0.0	0.2	28.4	1972-73	28.4	7,925.9
1973-74	0.0	0.0	0.0	0.2	2.6	0.9	10.5	0.0	5.2	0.4	0.1	0.0	19.9	1973-74	19.9	7,837.9
1974-75	0.1	0.0	0.0	1.1	0.2	4.0	0.2	3.2	6.7	2.5	0.2	0.1	18.3	1974-75	18.3	7,683.3
1975-76	0.0	0.0	0.0	0.2	0.1	0.7	0.0	5.8	2.8	1.5	0.2	0.2	11.5	1975-76	11.5	9,104.9
1976-77	0.0	0.4	3.9	1.0	0.8	0.6	3.3	0.3	1.9	0.0	4.4	0.0	16.7	1976-77	16.7	8,396.1
1977-78	0.0	2.2	0.0	0.0	0.2	7.2	8.6	7.9	15.8	3.8	0.0	0.0	45.7	1977-78	45.7	7,500.4
1978-79	0.0	0.0	0.8	0.5	2.2	2.3	7.5	4.4	7.6	0.0	0.1	0.1	25.5	1978-79	25.5	7,925.4
1979-80	0.0	0.0	0.0	1.3	0.3	1.0	11.8	19.4	6.7	0.7	0.5	0.0	41.7	1979-80	41.7	7,988.1
1980-81	0.0	0.0	0.0	0.0	0.0	1.1	3.7	1.4	0.8	0.7	0.0	0.0	7.7	1980-81	7.7	9,603.3
1981-82	0.0	0.0	0.0	1.1	2.6	0.8	3.2	0.7	7.3	2.8	0.5	0.0	19.0	1981-82	19.0	8,923.7
1982-83	0.0	0.0	1.9	0.7	6.9	2.4	9.1	4.9	15.0	7.8	0.3	0.1	49.1	1982-83	49.1	8,225.7
1983-84	0.0	0.0	2.5	1.7	3.9	4.0	0.0	0.0	0.5	0.3	0.0	0.1	15.0	1983-84	15.0	9,788.8
1984-85	0.0	2.0	0.3	0.1	3.0	6.3	1.0	2.2	1.5	0.0	0.3	0.0	14.9	1984-85	14.9	10,902.6
1985-86	0.0	0.0	0.2	0.8	4.5	0.5	3.3	6.3	6.4	0.3	0.0	0.0	22.3	1985-86	22.3	10,728.5
1986-87	0.3	0.3	2.2	0.5	1.5	0.5	2.2	1.9	1.7	0.5	0.1	0.1	11.6	1986-87	11.6	10,689.1
1987-88	0.2	0.0	0.4	2.7	3.0	3.1	2.5	1.5	2.0	3.7	0.0	0.1	19.2	1987-88	19.2	10,507.4
1988-89	0.0	0.3	0.5	0.0	1.9	5.6	1.1	3.2	1.3	0.0	0.2	0.0	14.0	1988-89	14.0	10,910.2
1989-90	0.0	0.0	1.1	1.3	0.7	0.0	2.5	4.0	0.4	1.7	1.1	0.0	12.7	1989-90*	12.7	10,470.2
1990-91	0.0	0.2	0.0	0.0	1.1	0.1	2.2	4.4	13.2	0.1	0.0	0.0	21.3	1990-91*	21.3	9,123.0
1991-92	0.3	0.0	0.0	0.8	0.0	4.6	3.2	14.8	10.3	0.3	0.0	0.0	34.3	1991-92*	34.3	7,811.1
1992-93	0.9	0.0	0.0	2.3	0.0	6.2	16.2	10.1	4.0	0.0	0.0	1.6	41.3	1992-93*	41.3	7,290.4
1993-94	0.0	0.0	0.0	0.3	1.3	1.4	0.5	4.1	2.9	1.4	0.8	0.1	12.7	1993-34*	12.7	8,087.2
1994-95	0.0	0.0	0.0	1.0	0.7	1.3	19.9	3.6	10.3	1.8	0.2	1.9	40.7	1994-95*	40.7	7,447.7
1995-96	0.0	0.0	0.0	0.0	0.0	1.3	1.6	10.2	4.0	1.2	0.0	0.0	18.3	1995-96*	18.3	9,047.2
1996-97	0.0	0.0	0.0	1.1	2.8	4.2	8.0	0.3	0.0	0.0	0.0	0.2	16.6	1996-97*	16.6	10,223.1
1997-98	0.0	0.0	0.6	0.0	3.0	3.8	3.9	17.9	4.9	2.6	6.3	0.3	43.3	1997-98*	43.3	8,078.2
1998-99	0.0	0.0	0.2	0.0	1.6	0.4	2.8	1.3	1.5	3.2	0.3	1.3	12.7	1998-99*	12.7	8,350.9
1999-00	0.0	0.0	0.0	0.0	0.3	0.0	1.0	9.0	3.4	3.2	0.0	0.0	16.9	1999-00*	16.9	11,413.6
2000-01	0.0	0.1	0.4	1.3	0.0	0.0	5.3	7.7	1.8	2.5	0.0	0.0	19.1	2000-01*	19.1	11,226.9
2001-02	0.1	0.0	0.0	0.1	2.5	1.4	2.1	0.5	0.7	0.2	0.3	0.2	8.1	2001-02*	8.1	12,196.3
2002-03	0.0	0.0	0.2	0.0	3.5	3.8	0.0	7.1	4.6	2.3	1.7	0.6	23.8	2002-03*	23.8	12,065.0
2003-04	0.0	0.0	0.0	0.0	1.4	2.9	0.4	8.0	1.8	0.5	0.0	0.0	14.9	2003-04*	14.9	13,838.5
2004-05	0.0	0.0	0.0	10.8	1.1	9.1	17.3	13.5	3.3	1.2	0.3	0.0	56.6	2004-05*	56.6	10,253.8
2005-06	0.0	0.0	0.3	3.3	0.4	0.3	4.1	3.8	4.4	4.1	1.0	0.1	21.8	2005-06*	21.8	9,848.8
2006-07	0.1	0.0	0.0	0.0	0.1	0.9	0.6	2.5	0.5	0.5	0.0	0.0	5.2	2006-07	5.2	11,978.8
2007-08	0.1	0.0	1.5	0.4	0.8	3.5	15.3	2.5	0.1	0.0	2.0	0.0	26.2	2007-08	26.2	12,331.0
2008-09	0.0	0.0	0.0	0.1	3.7	3.3	0.7	3.7	0.1	0.1	0.0	0.0	11.7	2008-09	11.7	11,353.0
2009-10	0.0	0.0	0.0	3.9	0.0	4.9	6.6	8.8	0.4	2.0	0.0	0.0	26.7	2009-10	26.7	10,090.0
AVERAGE	0.1	0.2	0.4	1.0	1.8	2.8	4.7	5.4	4.0	1.4	0.5	0.2	22.3		22.3	9,679.4
10 YR AVG	0.0	0.0	0.2	2.0	1.3	3.0	5.2	5.8	1.8	1.3	0.5	0.1	21.4		21.4	11,508.7
5 YR AVG	0.0	0.0	0.4	1.5	1.0	2.6	5.5	4.2	1.1	1.3	0.6	0.0	18.3		18.3	10,975.9
3 YR AVG	0.0	0.0	0.5	1.5	1.5	3.9	7.6	5.0	0.2	0.7	0.7	0.0	21.5		21.5	11,438.2

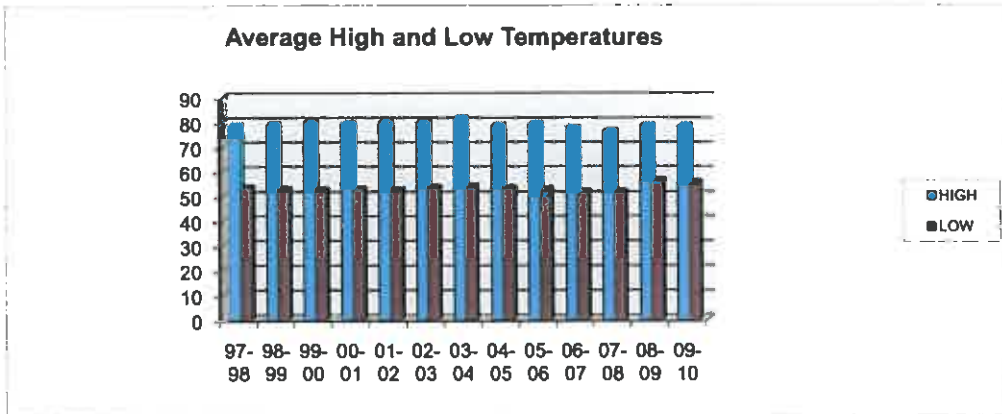
Rainfall and Temperature History

	90-91	91-92	92-93	93-94	94-95	95-96	96-97	97-98	98-99	99-00	00-01	01-02	02-03	03-04	04-05	05-06	06-07	07-08	08-09	09-10
Inches of Rainfall	21.3	34.3	41.3	12.7	40.7	18.3	16.6	43.3	12.7	16.9	19.1	8.1	23.8	14.9	56.6	21.8	5.2	26.2	11.7	26.7

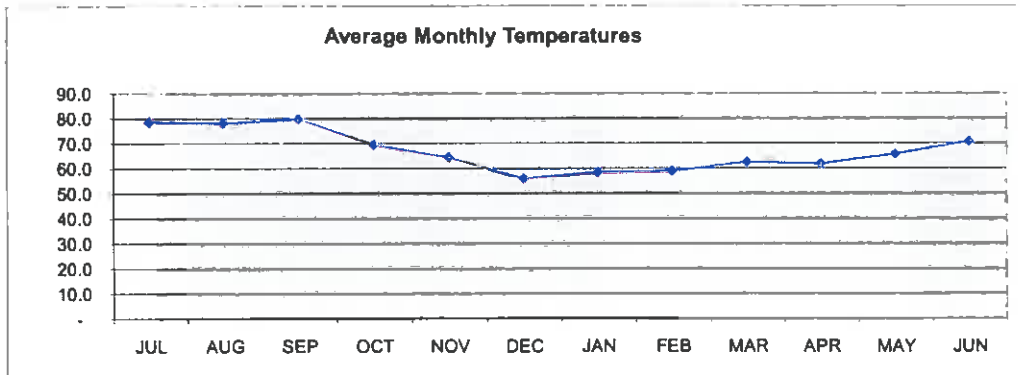


FMWD Rainfall History -- Inches of Rainfall

		97-98	98-99	99-00	00-01	01-02	02-03	03-04	04-05	05-06	06-07	07-08	08-09	09-10
Average	HIGH	78.7	79.2	80.0	79.3	80.1	79.8	81.7	78.8	79.4	77.7	76.5	78.8	###
Temperature	LOW	53.6	52.6	52.5	52.8	52.5	53.6	54.1	53.3	52.9	51.8	51.8	56.6	###

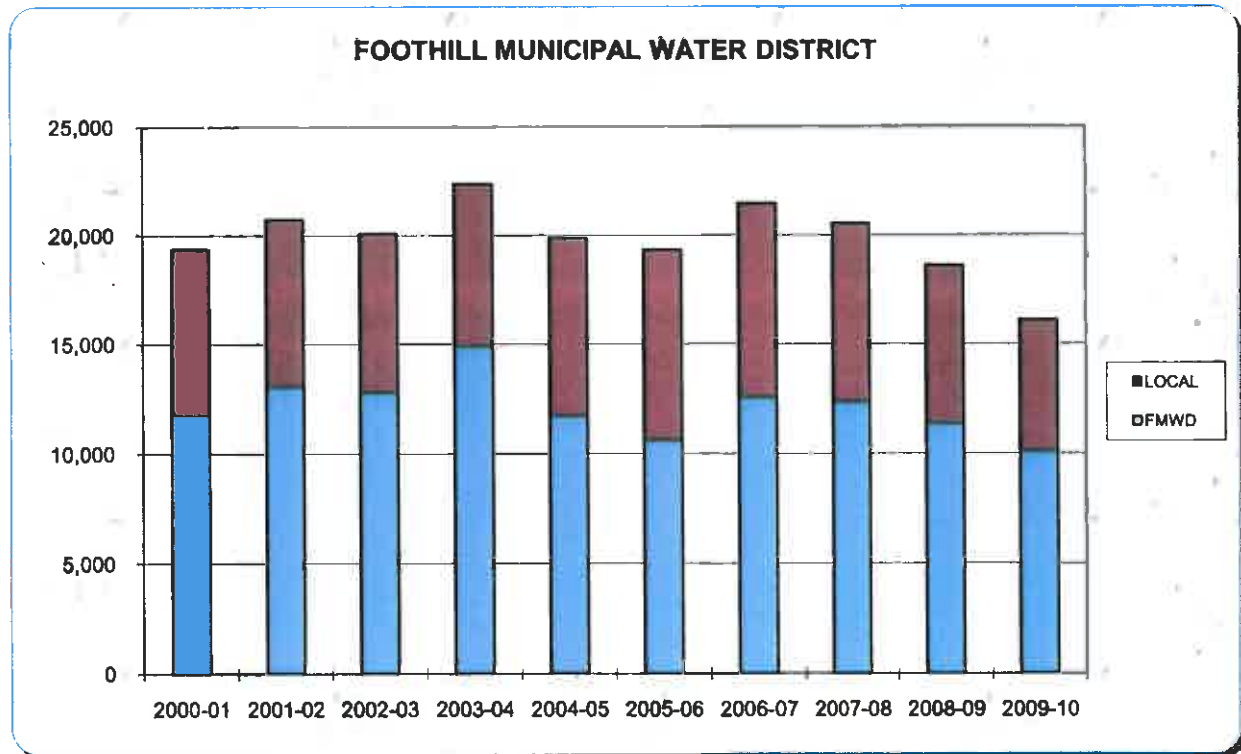
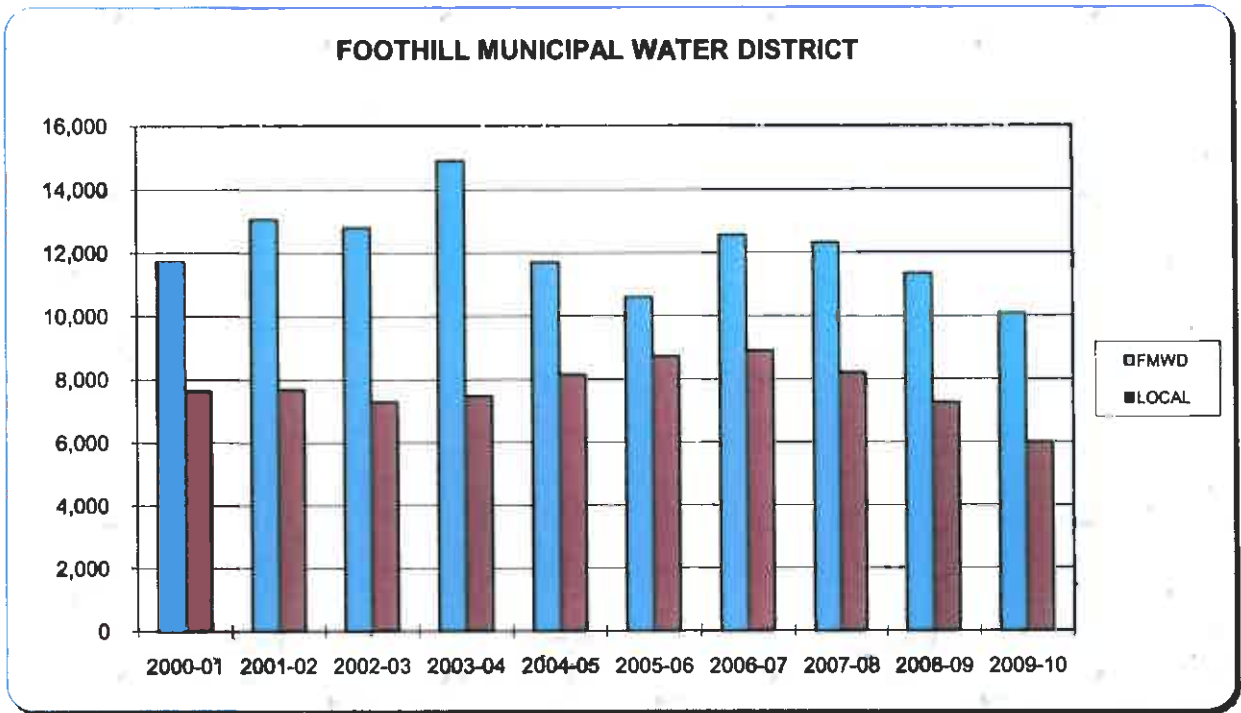


Average Temperature	JUL	AUG	SEP	OCT	NOV	DEC	JAN	FEB	MAR	APR	MAY	JUN
	78.6	78.2	79.9	69.5	64.6	56.0	58.5	59.0	62.6	61.8	65.7	70.8



FMWD Temperature History

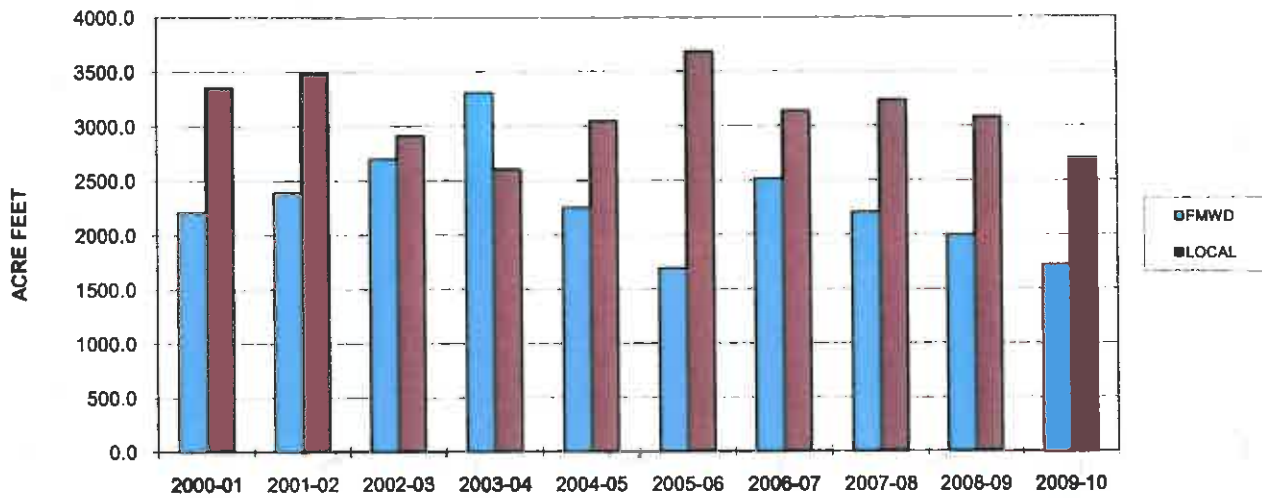
SERVICE AREA TOTAL DEMAND
ANNUAL PRODUCTION



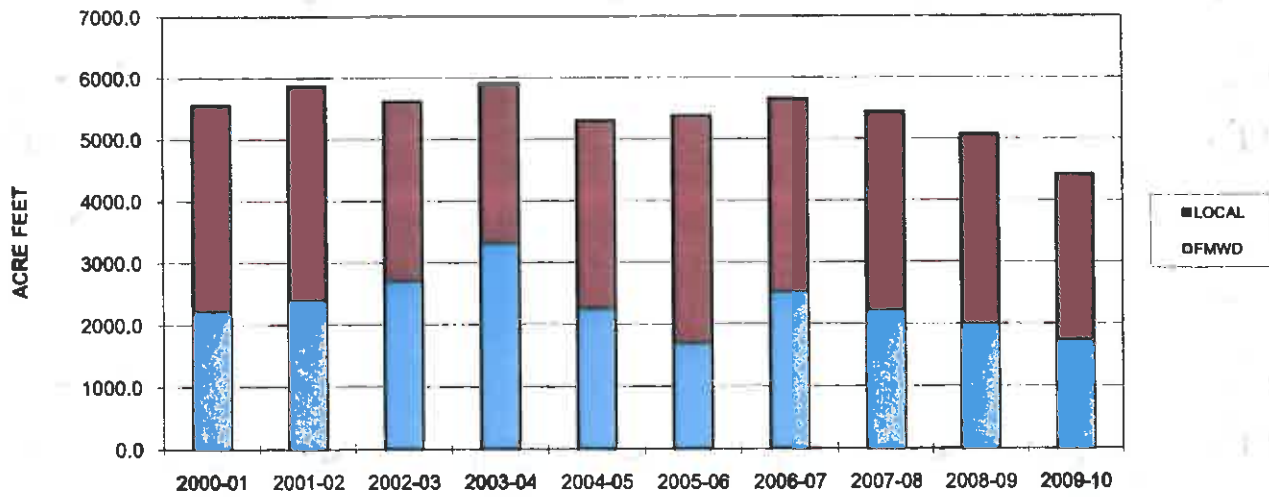
* Local production does not include water treated and transferred to Pasadena by Lincoln.

RETAIL AGENCY
ANNUAL PRODUCTION

CRESCENTA VALLEY WATER DISTRICT

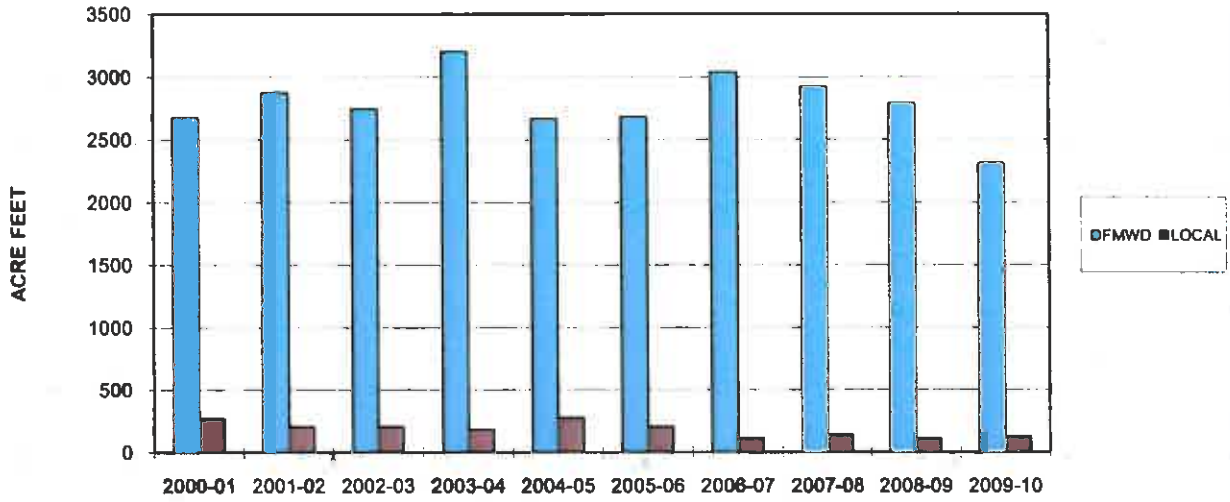


CRESCENTA VALLEY WATER DISTRICT

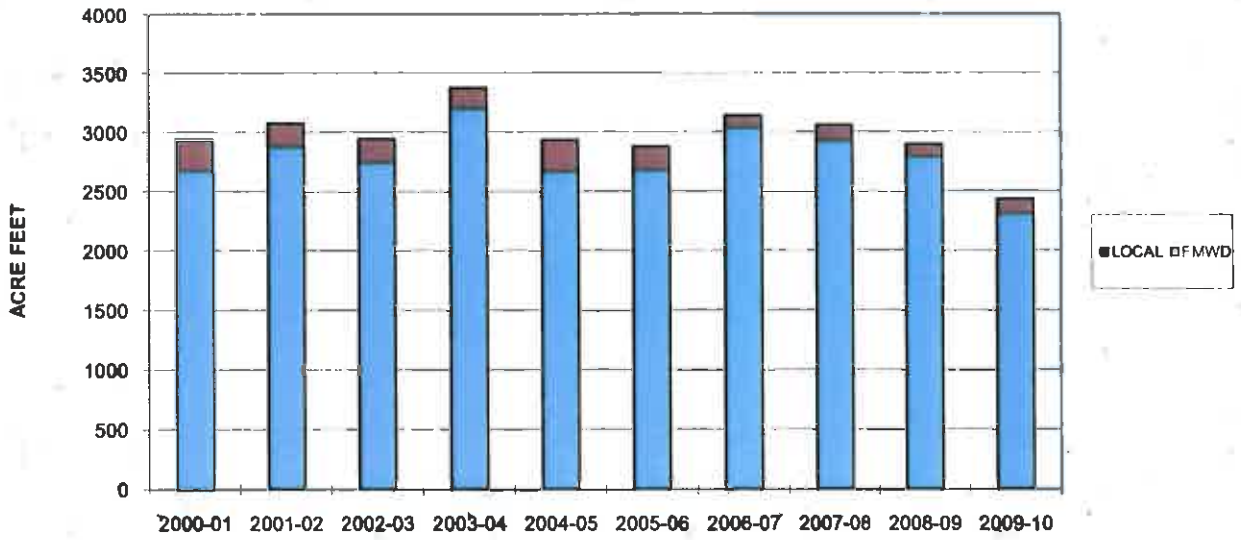


RETAIL AGENCY
ANNUAL PRODUCTION

LA CANADA IRRIGATION DISTRICT

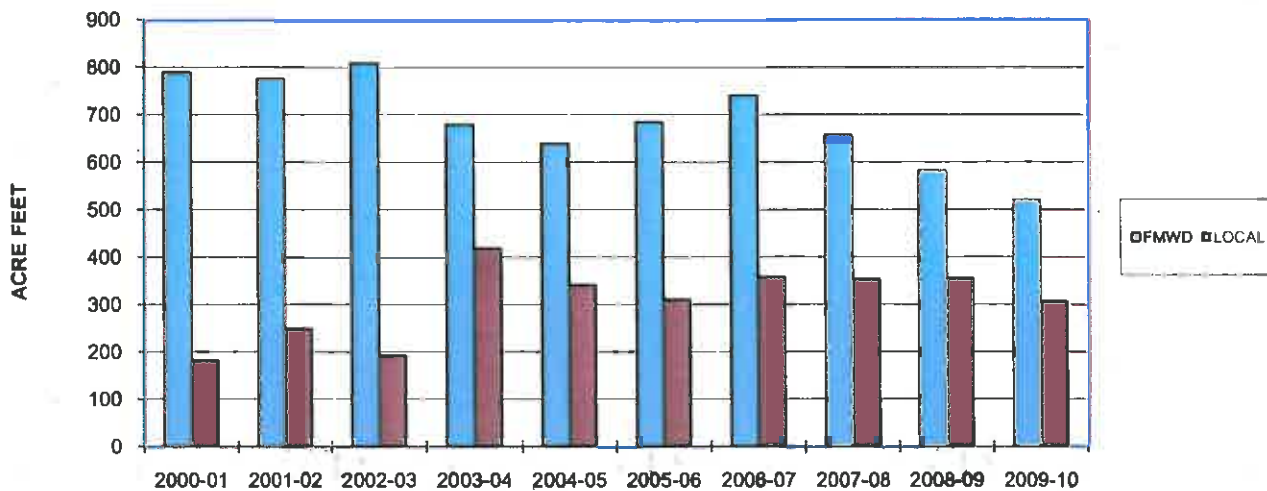


LA CANADA IRRIGATION DISTRICT

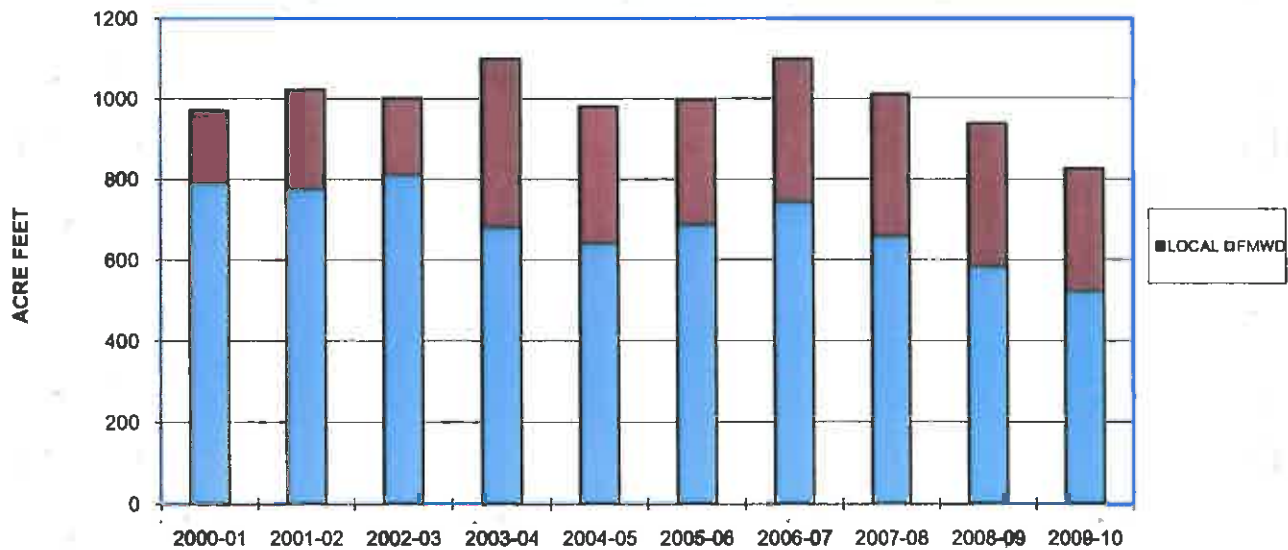


RETAIL AGENCY
ANNUAL PRODUCTION

LAS FLORES WATER COMPANY

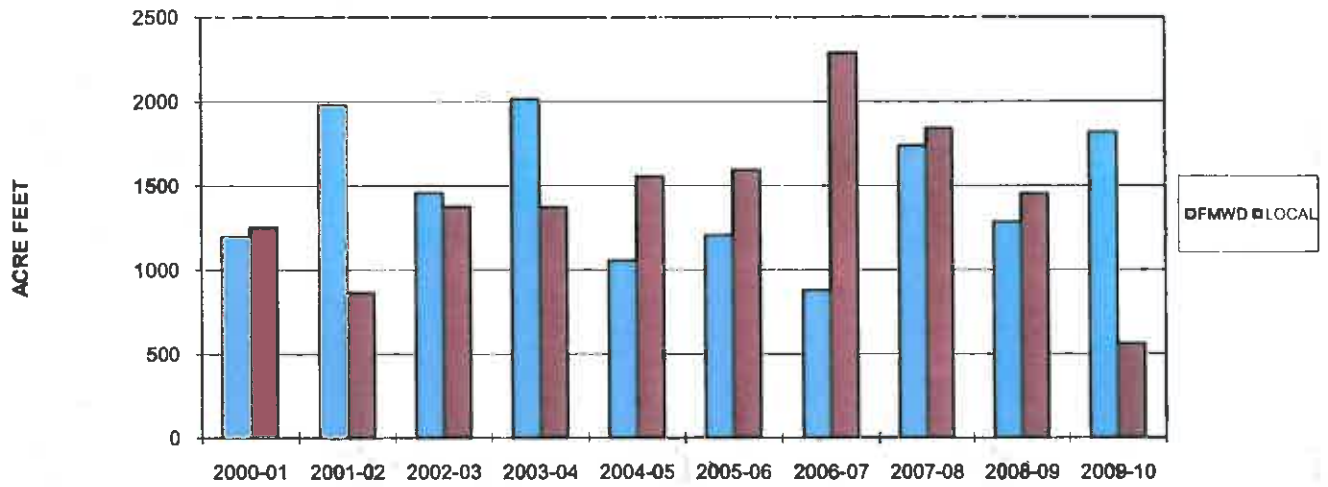


LAS FLORES WATER COMPANY

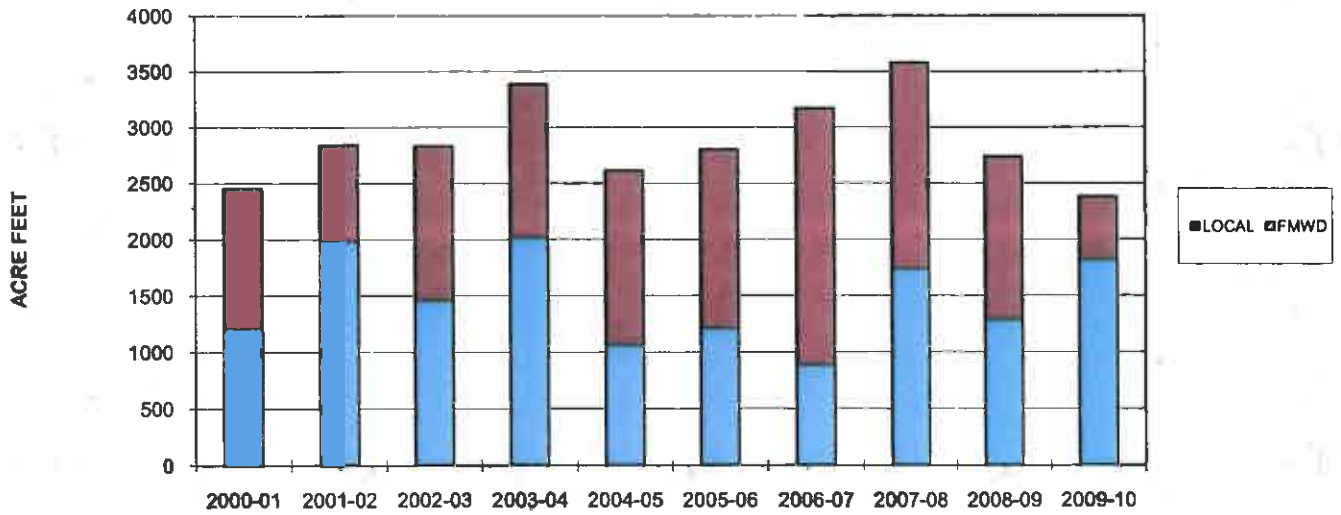


RETAIL AGENCY
ANNUAL PRODUCTION

LINCOLN AVENUE WATER COMPANY

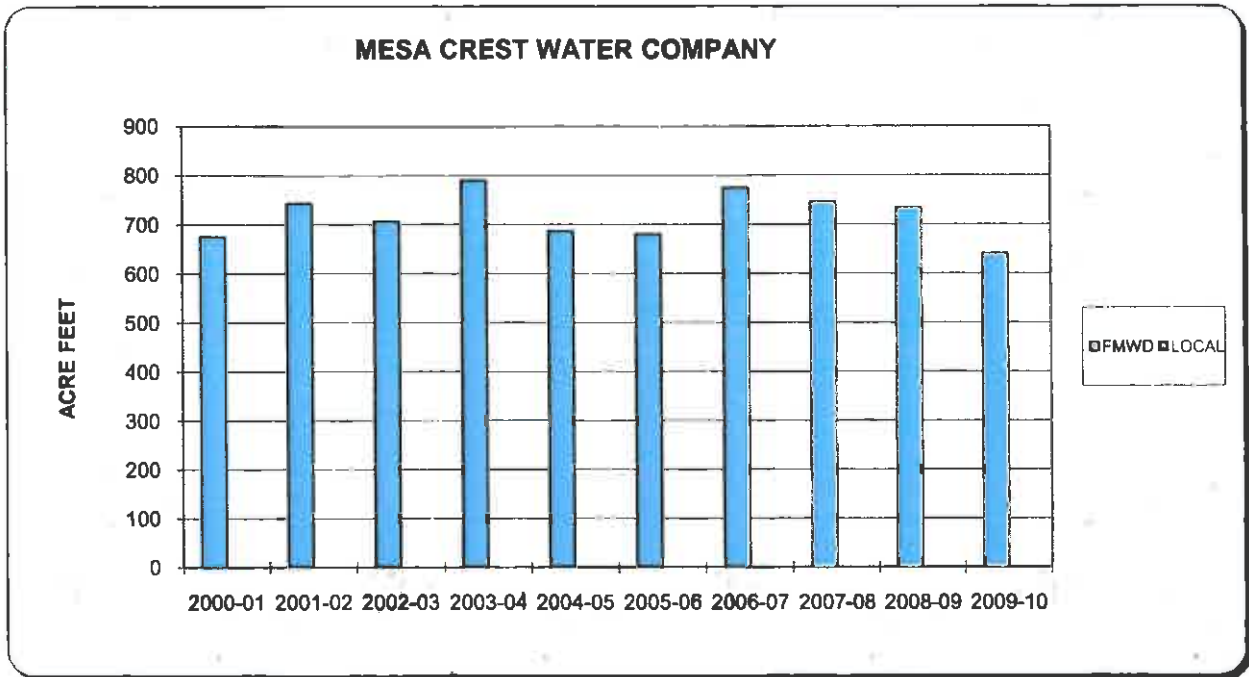


LINCOLN AVENUE WATER COMPANY



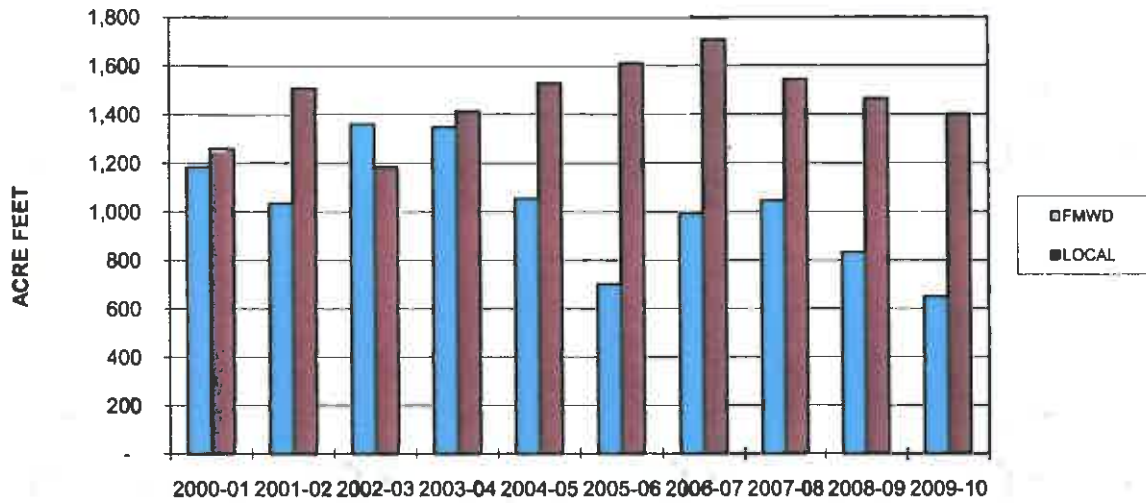
* Local Production does not include water treated and transferred to Pasadena by Lincoln.

RETAIL AGENCY
ANNUAL PRODUCTION

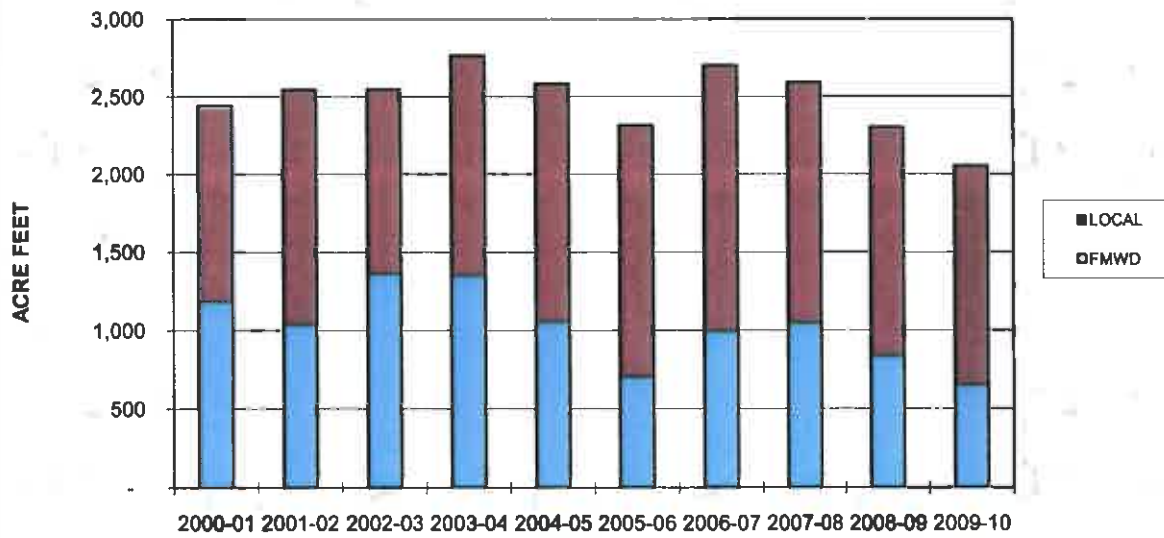


RETAIL AGENCY
ANNUAL PRODUCTION

RUBIO CANON LAND & WATER ASSOCIATION

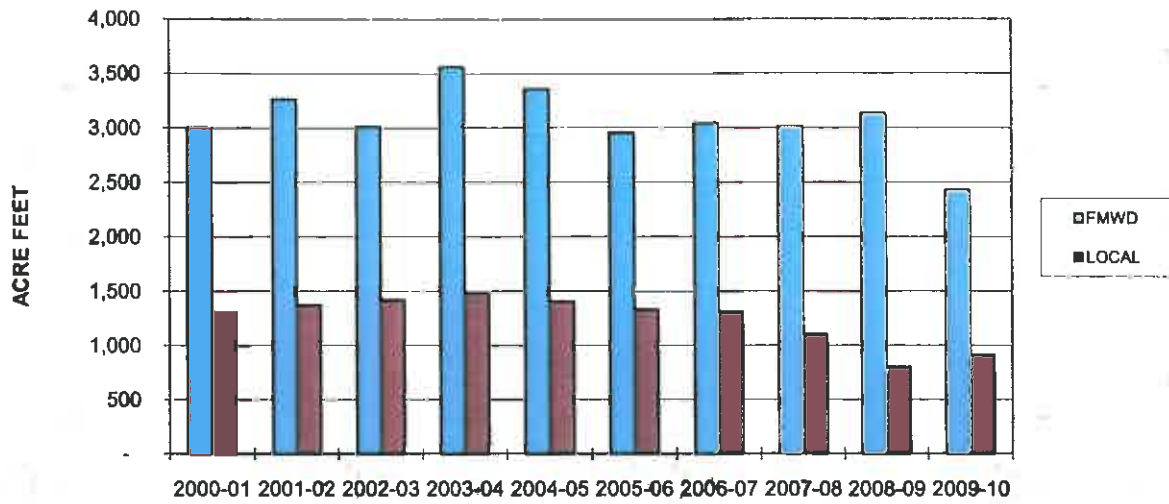


RUBIO CANON LAND & WATER ASSOCIATION

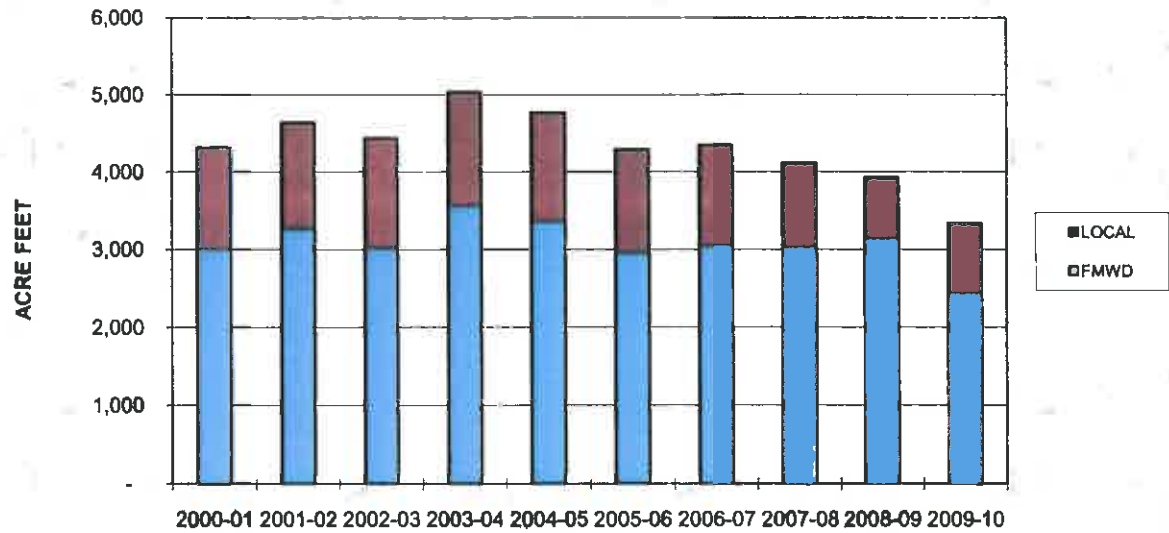


RETAIL AGENCY
ANNUAL PRODUCTION

VALLEY WATER COMPANY



VALLEY WATER COMPANY



V. POWER USE

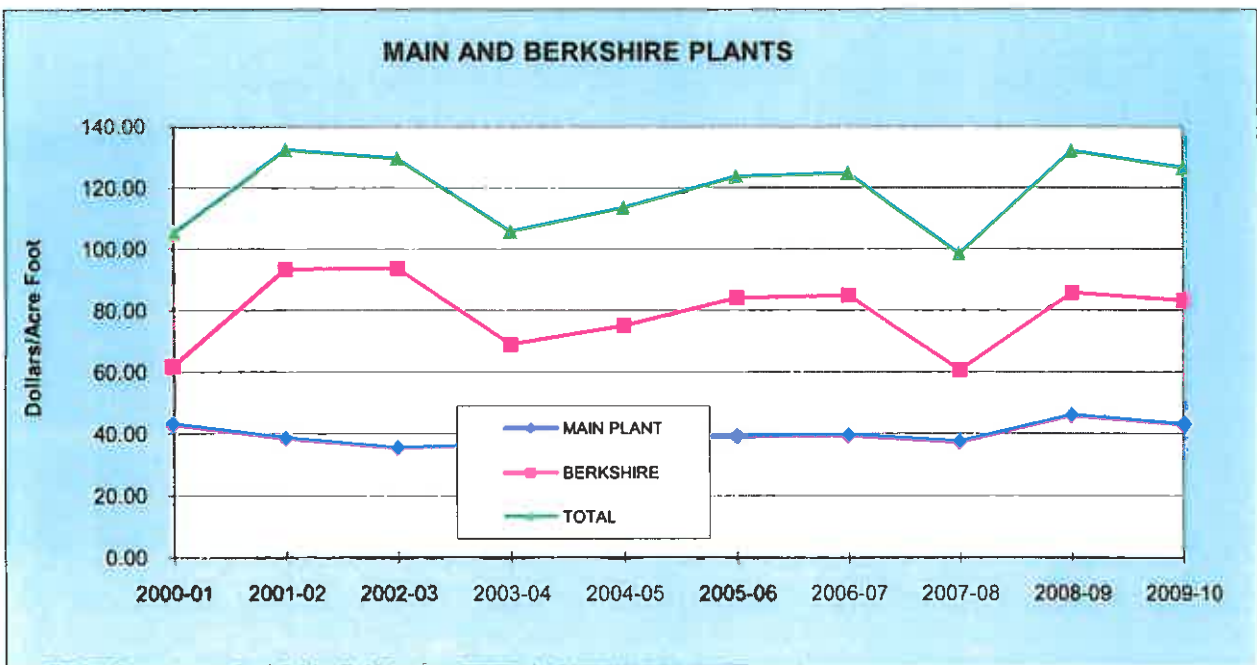
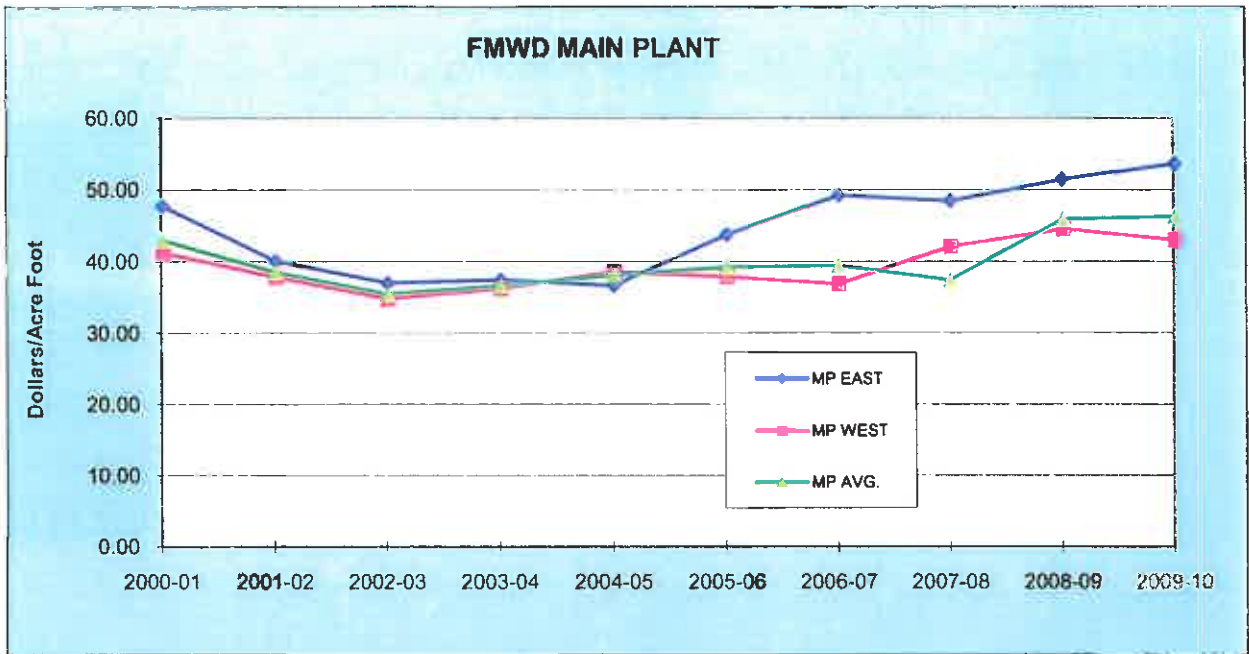
WATER AND POWER - JULY 1, 2009 THROUGH JUNE 30, 2010
Power Cost by Reservoir Systems

<u>Reservoir System</u>	<u>Acre Foot Water Delivery</u>	<u>2009-10 Total Power Cost</u>	<u>6/30/2010 Cost Per AF</u>	<u>6/30/2009 Cost Per AF</u>	<u>Change In Cost Per AF</u>
ALTADENA:					
Las Flores Water Company	519.9				
Lincoln Avenue Water Company	1,817.6				
Rubio Canon Land & Water	650.4				
	<u>2,987.9</u>	\$ 160,324	\$ 53.66	\$ 51.43	\$ 2.22
LA CANADA:					
Crescenta Valley Water Dist.	1,638.3				
La Canada Irrigation District	777.3				
La Canada Irrigation District	1,350.4				
Mesa Crest Water Company	640.3				
Valley Water Company	2,426.9				
FHCUP Injection	-				
	<u>6,833.2</u>	\$ 293,824	\$ 43.00	\$ 44.42	\$ (1.42)
Pasadena Water & Power	9,821.1	\$ 454,148	\$ 46.24	\$ 45.77	\$ 0.47
LA CRESCENTA:					
Crescenta Valley Water Dist.	1,723.7				
La Canada Irrigation District	1,350.4				
Valley Water Company	-				
SCE	<u>3,074.1</u>	\$ 256,143	\$ 83.32	\$ 85.28	\$ (1.96)
TOTALS	9,821.1	\$ 710,291	\$ 72.32	\$ 73.96	\$ (1.64)
<hr/>					
Water Purchased from MWD ^{1,2}	9,963.2			Water delivered by FMWD	9,821.1
Water Purchased from Pasadena	-			Water delivered by MWD	9,695.5
Total Water Purchased	<u>9,963.2</u>			Acre Foot Difference	125.6
				% Difference	1.30%

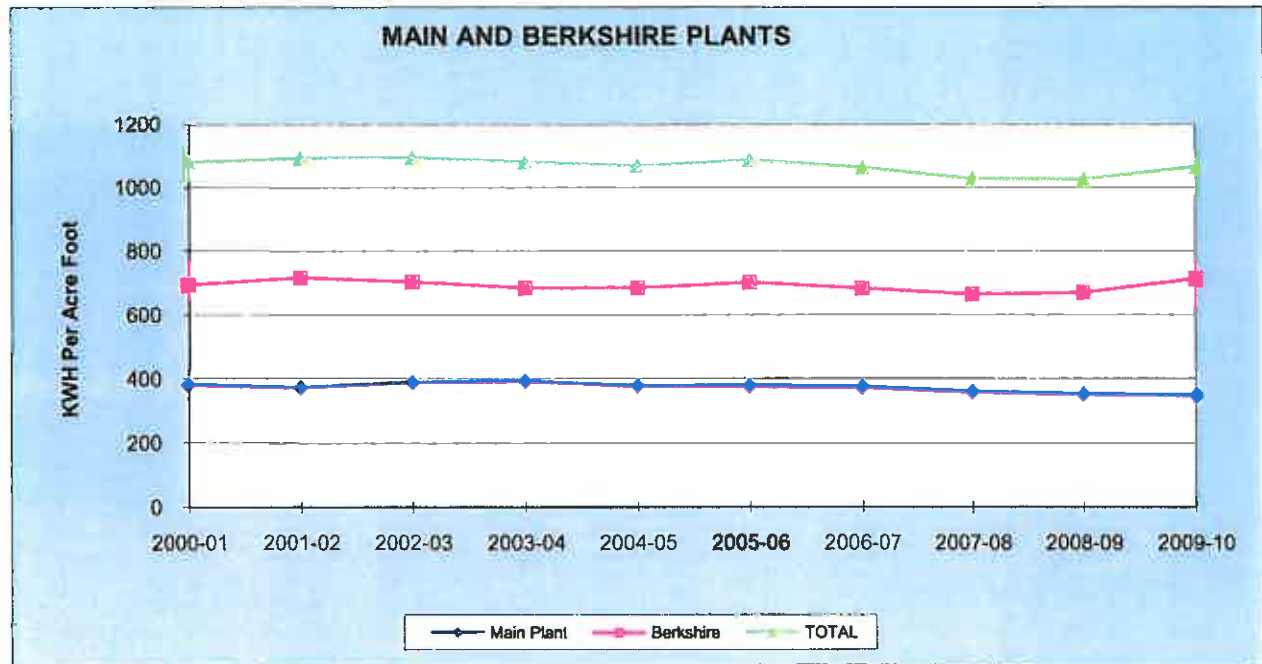
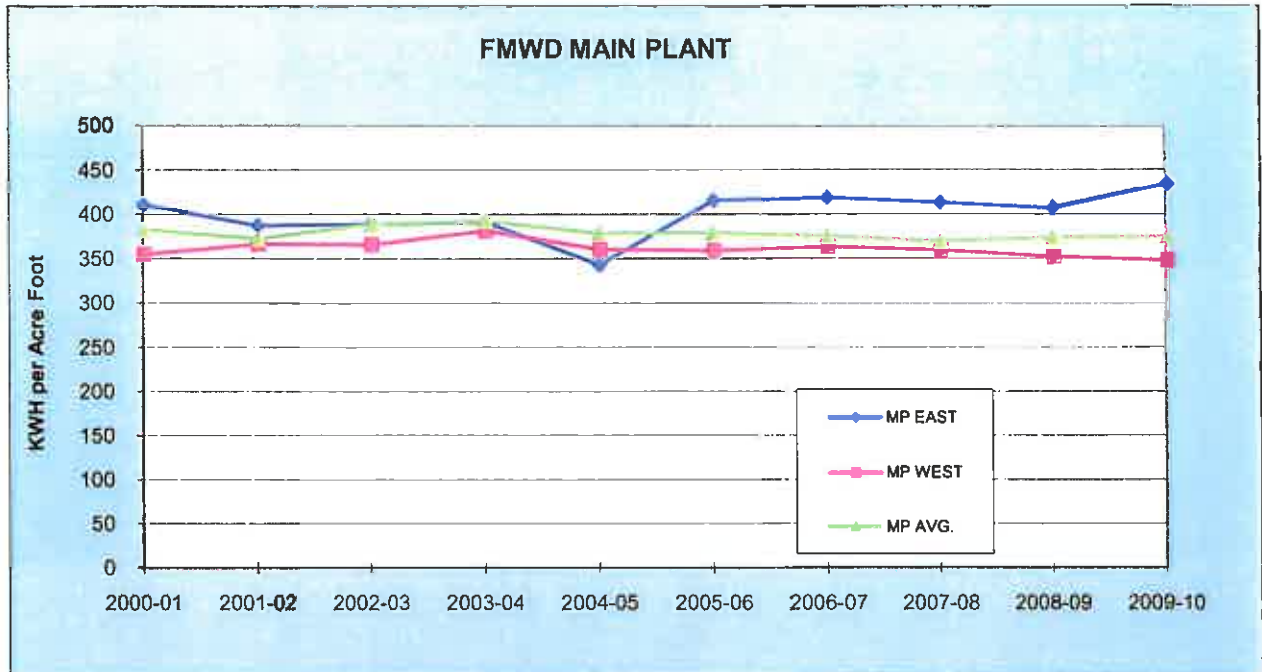
NOTES:

1. In addition, 183.2 AF of FHCUP water was produced that is not included in these deliveries.
2. 85.4 AF of water delivered from the Glendale/CVWD interconnection not included in these deliveries.

**ENERGY COST PER
ACRE FOOT**



ENERGY COST PER ACRE FOOT



VI. GENERAL

FOOTHILL MUNICIPAL WATER DISTRICT GENERAL COMPOSITION

Foothill Municipal Water District's (FMWD) jurisdictional area encompasses approximately 21.66 square miles of which 17.2 square miles comprise the present service area. All land area within the service area is essentially fully developed. The dominant categories of land use are estimated at 90% residential, 5% government, and 5% light commercial. The District serves approximately 84,000 people residing in the communities of Altadena, La Cañada Flintridge, and La Crescenta.

HISTORY

With the accelerating real estate development of the foothill area after the end of World War II and steadily increasing demand for water, the safe yields of the Raymond and Verdugo Basins were reached. It became imperative that an additional water supply be secured as soon as possible. The Raymond Basin, in the northwest corner of the San Gabriel Valley, is a reliable source of potable groundwater for the cities of Alhambra, Arcadia, La Cañada Flintridge, Pasadena, San Marino, Sierra Madre, and the community of Altadena (and in particular, the Monk Hill sub-basin for the FMWD area). The Verdugo Basin is a sub-basin of the San Fernando Basin that provides water to La Crescenta and a portion of the city of Glendale.

In 1949, the Foothill Water Group was formed by the concerned citizens of Altadena, La Cañada, and the Crescenta valley to secure additional water. These were forward looking men who preferred to solve their own water problem rather than submit to annexation to a municipality. Careful studies indicated the solution to the problem was to form a water district for the purpose of annexing to the Metropolitan Water District of Southern California (MWD) and thus secure access to Colorado River water. Foothill Municipal Water District was organized in 1951 by a vote of the citizens of Altadena, La Cañada and La Crescenta. Now, however, a change in state law would be required.

Frank Lanterman, a long-time resident of La Cañada and a director of Valley Water Company, was elected to the office of state assemblyman. With his help, the MWD Act was amended to allow municipal water districts to join MWD rather than limiting membership exclusively to cities. FMWD was formally incorporated as a municipal water district on January 7, 1952, and formal annexation to MWD was approved on January 15, 1953. Construction of the District's distribution system, using voter approved bond monies, was completed in 1954.

Foothill Municipal Water District, as a water wholesaler, currently serves seven retailing agencies. They are:

Las Flores Water Company, Altadena
Lincoln Avenue Water Company, Altadena
Rubio Cañon Land & Water Association, Altadena

La Cañada Irrigation District, La Cañada Flintridge
Mesa Crest Water Company, La Cañada Flintridge
Valley Water Company, La Cañada Flintridge

Crescenta Valley Water District, La Crescenta

An additional retailing agency, the Kinneloa Irrigation District, is located at the eastern end of Foothill's boundaries. Foothill deliveries to Kinneloa are not anticipated until some time after 2010.

OPERATION AND MAINTENANCE

GENERAL

Operation and maintenance of the Foothill Municipal Water District's facilities and equipment is directed from the Operations Center at 4602 Hampton Road in La Cañada Flintridge. The water distribution system is managed through a SCADA (Supervisory Control and Data Acquisition) system. Six District operation and maintenance employees operate the distribution system and perform maintenance and repair of the system. Major construction and repair projects are performed by contractors under the District's supervision.

The Operations Center is staffed every day, including weekends and holidays, from 7:30 a.m. to 10:00 p.m. During off-hours, a system operator is on standby and responds to any alarm condition.

The District's Main Pumping Station and additional maintenance facilities are located at 1630 Rosemont Avenue in Pasadena, one mile north of the Rose Bowl. Materials, supplies, tools and equipment are stored in three storage buildings and an equipment port at this site.

OPERATIONS

Metropolitan Water District's Upper Feeder is tapped in the vicinity of Seco Street and Rosemont Avenue in Pasadena near the Rose Bowl. This treated water flows by gravity from Metropolitan's system through Foothill's 39-inch Arroyo Seco Gravity Main which traverses a northerly direction in the vicinity of Rosemont Avenue and terminates at the District's Main Pumping Station.

The Main Pumping Station consists of two banks of electrically driven vertical turbine pumps. The East bank of boosters pushes water into the Altadena Force Main leading to the Altadena Reservoir pressure zone; while the West propels water into the Westside Force Main leading to the La Cañada Reservoir pressure zone and, via the Berkshire Booster Station, into the La Crescenta Force Main and the La Crescenta pressure zone. In total, Foothill maintains approximately 10 miles of transmission water mains, ranging in size from 24" to 39".

The bank of pumps which supplies the 24-inch Altadena Force Main consists of five boosters, ranging in size from 100 to 350 HP, with a total capacity of 8.9 million gallons per day (MGD). Las Flores Water Company, Lincoln Avenue Water Company, and Rubio Cañon Land & Water Association are served by this system.

The bank of boosters which supplies the Westside Force Main consists of five pumps, ranging in size from 125 to 350 HP, with a total capacity of 14.6 MGD. Water is lifted through the 30-inch Westside Force Main to a junction with the 24-inch La Cañada Lateral and the Berkshire Booster Station Lateral. The La Cañada Lateral terminates at the La Cañada reservoirs. Water agencies served by this part of the system are the La Cañada Irrigation District, Mesa Crest Water Company, and Valley Water Company.

As a backup to the electrical service provided to this pump station by the Municipal Power Department of the City of Pasadena, the District maintains two 500 kW portable diesel driven generators at this plant. The existing control system can no longer electrically synchronize the units and consequently, their output is limited to approximately 14.0 cfs

The 1200 horsepower Berkshire Booster Station consists of four 300 HP electrically driven vertical turbine pumps with a total capacity of 10.0 MGD. Water is pumped by the Berkshire pumps through the 24-inch La Crescenta Force Main into the La Crescenta Reservoir pressure zone. Water agencies served by this part of the system are the Crescenta Valley Water District, La Cañada Irrigation District, and Valley Water Company.

As a backup to the electrical service provided by the Southern California Edison Company, the District maintains a 350kW portable diesel driven generator at this booster station which can provide enough power for up to 4 cfs of flows.

The system reservoir facilities consist of 6 storage tanks at 3 pressure zone locations with a total storage capacity of 6.8 million gallons.

<u>Reservoir</u>	<u>Capacity(mg)</u>	<u>Type</u>	<u>Built</u>
Altadena Reservoir North	1.4	Gunnite/Reinforced Concrete	1954
Altadena Reservoir South	1.2	Reinforced Concrete	1991
La Canada Reservoir East	1.0	Steel	1954
La Canada Reservoir West	1.2	Reinforced Concrete	1986
La Crescenta Reservoir East	1.0	Steel	1954
La Crescenta Reservoir West	1.0	Steel	1954

OPERATIONS AND MAINTENANCE PROJECTS FISCAL YEAR 2009-10

Linda Vista Interconnection

The rehabilitation of the automatic control valve and associated equipment was completed allowing for the emergency operation of this valve at street level rather than needing additional staffing, traffic control set up and meeting confined space requirements.

La Canada East Reservoir Sight Gage

A new mechanical sight gage was installed. This allows for the reading of reservoir levels in case of electrical power or telemetry system failure.

Security Enhancements

Automatic gates were installed at our Main Pump Station, Berkshire Pump Station and Administration/Operations center in an effort to increase security. In addition, the fencing around some facilities was improved.

Linda Vista Manhole Cover and Ring Replacement

A damaged manhole cover on Linda Vista was repaired and the ring replaced. If left unrepaired, it could have been a traffic hazard.

Booster 1B

A sound enclosure was constructed for Booster 1B. The enclosure was required due to excessive noise emanating from the booster and disturbing neighbors.

Air Compressors

Four air compressors were serviced and recertified. This is part of a routine maintenance program.

Painting Sound Enclosures

Staff has been painting the sound enclosures around the boosters as the pumps and motors are rehabilitated or replaced. It was decided to proceed with this process, although labor intensive, rather than wait for a painting contractor to do this portion of the painting required at the Main Pump Station since the enclosures would then need to be disassembled.

Berkshire Station Fittings

Many of the compromised fittings at the Berkshire Station were replaced during a half day outage at the station.

HVAC for Board Room and Administrative Offices

The HVAC for both the Board room and Administrative offices was replaced. The venting was redesigned so that the systems would work more efficiently and quietly.

Security Improvements

All locks District-wide were replaced with security locks.

Main Line Valve Annual Exercising

Out of the 20 total valves in the District's system, 4 were exercised during the year on an ongoing program. These were #14, #16, #17 (Alta Canyada Rehab) and #7 (P-1 Pump Efficiency Tests).

Air / Vacuum Combination Valve Annual Maintenance and Replacement

There are 22 combination valves in the District's system. 3 valves were replaced and 5 valves were flushed for maintenance.

Cla-Valve Pump Control Valve Routine Maintenance

7 Cla-Valves were inspected. There are 15 in the District's distribution system. The valves at the Main Pump Station are inspected and maintained every 18 months. The valves at the Berkshire Pump Station are inspected and maintained every 12 months.

METROPOLITAN WATER DISTRICT OF SOUTHERN CALIFORNIA

The Metropolitan Water District of Southern California (MWD) was created by public vote in 1928 under the Metropolitan Water District Act of the State of California as a special district of the state. Its purpose is to provide a supplemental water supply for Southern California's coastal plain. About 90 percent of the water supplied by Metropolitan is used for municipal and industrial purposes and the remaining 10 percent goes to agricultural uses.

MWD's service area encompasses more than 5,200 square miles and is located on the coastal plain of Southern California, extending about 200 miles along the coast from the City of Oxnard on the north to the Mexican border on the south and inland as far as 70 miles. It includes portions of the six counties of Los Angeles, Orange, Riverside, San Bernardino, San Diego, and Ventura. There are 26 member agencies of the District, consisting of 13 original cities, one city added in 1971, 11 municipal water districts, and 1 county water authority. The total population in the service area is approximately 18 million.

Under the MWD Act, policy is established by a board of directors which represents the member agencies. Under present policy, each member agency is entitled to a minimum of one director. An additional representative may be appointed for each full 5 percent of the total MWD assessed valuation which lies within the member agency's boundaries. MWD member agencies are listed below:

Original Cities

Anaheim	Beverly Hills	Burbank	Compton
Fullerton	Glendale	Long Beach	Los Angeles
Pasadena	San Marino	Santa Ana	Santa Monica
		Torrance	

Municipal Water Districts

Calleguas	Central Basin	Inland Empire	Eastern
Foothill	Las Virgenes	Orange County	Three Valleys
West Basin	Upper San Gabriel Valley	Western	

Additional Member Agencies

City of San Fernando - Joined in 1971
San Diego County Water Authority

Water is imported by MWD from two sources:

1.) The Colorado River via its Colorado River Aqueduct. The Colorado River Aqueduct, owned and operated by the District, transports water from the Colorado River 242 miles to its terminus at Lake Mathews, near the City of Riverside.

2.) Northern California via the State Water Project's Governor Edmund G. Brown California Aqueduct (the "California Aqueduct"). The State Water Project (SWP), which is owned and operated by the California Department of Water Resources, serves 30 State water contractors including MWD. The primary water storage facility for the SWP is Lake Oroville on the Feather River in Northern California. Water released from Lake Oroville, together with water in the Sacramento River, flows to the Sacramento-San Joaquin Delta, located inland from the San Francisco Bay. From the Delta, water is pumped into the California Aqueduct near the City of Tracy.

The California Aqueduct, including the East Branch, is 444 miles in length and transports water from the Delta through the San Joaquin Valley over the Tehachapi Mountains and then to the East Branch terminus at Lake Perris in Riverside County. The other major branch of the California Aqueduct, referred to as the West Branch, is 32 miles in length and has its terminus at Castaic Lake in northern Los Angeles County. MWD receives State Project water at four delivery points, one in Los Angeles County, one in San Bernardino County, and two in Riverside County.

MWD has five filtration plants in operation. These are: Skinner Filtration Plant in Winchester; Weymouth Filtration Plant in La Verne; Diemer Filtration Plant near Yorba Linda; Jensen Filtration Plant in Granada Hills; and the Mills Filtration Plant in Riverside.

FMWD receives its treated water from the Weymouth Plant. Metropolitan Water District's Upper Feeder is tapped in the vicinity of Seco Street and Rosemont Avenue in the City of Pasadena. Water flows from Metropolitan's system into Foothill's 39-inch pipeline called the Arroyo Seco Gravity Main which traverses a northerly direction in the vicinity of Rosemont Avenue and terminates at the District's Main Pump Plant located near Rosemont Avenue and Washington Boulevard in Pasadena.

Water Sales

MWD sold approximately 1.78 million acre-feet of water during fiscal year 2009-10. Sales to FMWD of 10,090 acre-feet represents 0.6% of MWD's total sales. Additionally, Metropolitan called for Foothill's member agencies to produce water from the FHCUP. La Cañada Irrigation District produced 183 acre feet. This water is considered MWD water, placed into the groundwater basin when available and produced and sold during a supply shortage.